

## CALHM1 RABBIT PAB

**Cat.#:** S218425

**Product Name:** Anti-CALHM1 Rabbit Polyclonal Antibody

**Synonyms:** FAM26C

**UNIPROT ID:** Q8IU99 (Gene Accession - BC036193 )

**Background:** This gene encodes a calcium channel that plays a role in processing of amyloid-beta precursor protein. A polymorphism at this locus has been reported to be associated with susceptibility to late-onset Alzheimer's disease in some populations, but the pathogenicity of this polymorphism is unclear.

**Immunogen:** Fusion protein of human CALHM1

**Applications:** ELISA, IHC

**Recommended Dilutions:** IHC: 50-300; ELISA: 5000-10000

**Host Species:** Rabbit

**Clonality:** Rabbit Polyclonal

**Isotype:** Immunogen-specific rabbit IgG

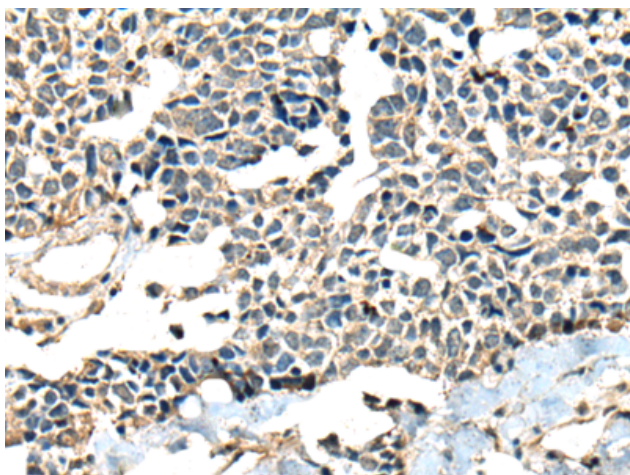
**Purification:** Antigen affinity purification

**Species Reactivity:** Human, Mouse

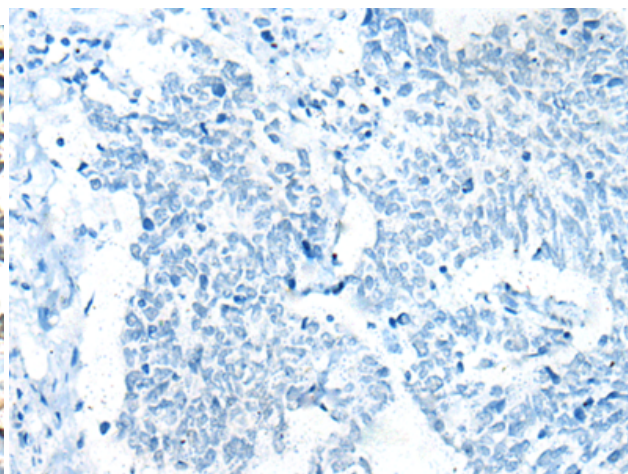
**Constituents:** PBS (without Mg<sup>2+</sup> and Ca<sup>2+</sup>), pH 7.4, 150 mM NaCl, 0.05% Sodium Azide and 40% glycerol

**Research Areas:** Metabolism, Signal Transduction, Neuroscience

**Storage & Shipping:** Store at -20°C. Avoid repeated freezing and thawing



Immunohistochemistry analysis of paraffin embedded Human lung cancer tissue using 218425(CALHM1 Antibody) at a dilution of 1/60(Cytoplasm and Cell membrane).



In comparison with the IHC on the left, the same paraffin-embedded Human lung cancer tissue is first treated with the fusion protein and then with 218425(Anti-CALHM1 Antibody) at dilution 1/60.