

CALNEXIN RABBIT PAB

Cat.#: N225346

Product Name: Anti-Calnexin Rabbit pAb

Synonyms: CANX; Calnexin; IP90; Major histocompatibility complex class I antigen-binding protein p88; p90

UNIPROT ID: P27824

Background: Calnexin is a calcium-binding protein embedded in the ER membrane that retains the newly synthesized glycoproteins inside the ER to ensure proper folding and quality control (3-5). The specificity of calnexin for a subset of glycoproteins is defined by a lectin site, which binds an early oligosaccharide intermediate on the folding glycoprotein.

Immunogen: The antiserum was produced against synthesized peptide derived from human Calnexin. AA range:543-592

Applications: WB,IHC-F,IHC-P,ICC/IF,ELISA

Recommended Dilutions: WB: 1/500-1/1000 IHC: 1/50-1/100 IF: 1/50-1/200
ELISA: 1/10000

Host Species: Rabbit

Clonality: Rabbit Polyclonal

Clone ID: -

MW: Calculated MW: 68 kDa; Observed MW: 90 kDa

Isotype: IgG

Purification: Affinity Purified

Species Reactivity: Human,Mouse,Rat

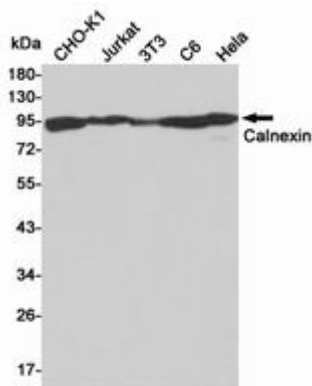
Conjugation: Unconjugated

Modification: Unmodified

Constituents: PBS (without Mg²⁺ and Ca²⁺), pH 7.3 containing 50% glycerol, 0.5% BSA and 0.02% sodium azide

Research Areas: Tags & Cell Markers

Storage & Shipping: Store at -20°C. Avoid repeated freezing and thawing



Western blot analysis of Calnexin in CHO-K1, Jurkat, 3T3, C6 and HeLa lysates using Calnexin antibody.