

CALRETININ RABBIT MAB

Cat.#: N261949

Product Name: Anti-Calretinin Rabbit Monoclonal Antibody

Synonyms: Calretinin; CR; 29 kDa calbindin

UNIPROT ID: P22676

Background: Calretinin is a calcium-binding protein which is abundant in auditory neurons.

Immunogen: A synthetic peptide of human Calretinin

Applications: WB, ICC/IF

Recommended Dilutions: WB: 1/500-1/1000 IF: 1/50-1/200

Host Species: Rabbit

Clonality: Rabbit Monoclonal

Clone ID: R01-2G7

MW: Calculated MW: 32 kDa; Observed MW: 32 kDa

Isotype: IgG

Purification: Affinity Purified

Species Reactivity: Rat

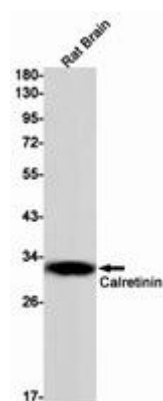
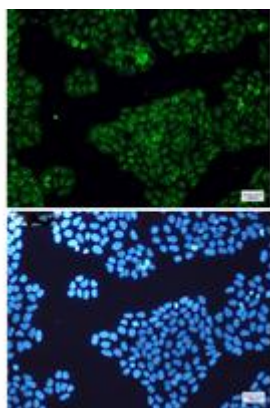
Conjugation: Unconjugated

Modification: Unmodified

Constituents: PBS (without Mg²⁺ and Ca²⁺), pH 7.3 containing 50% glycerol, 0.5% BSA and 0.02% sodium azide

Research Areas: Tags & Cell Markers

Storage & Shipping: Store at -20°C. Avoid repeated freezing and thawing



Immunocytochemistry analysis of Calretinin (green) in Hela using Calretinin antibody, and DAPI (blue) antibody. Western blot analysis of Calretinin in rat Brain lysates using Calretinin antibody.



Product Description

Pioneering GTPase and Oncogene Product Development since 2010
