

CALUMENIN RABBIT MAB

Cat.#: N263248

Product Name: Anti-Calumenin Rabbit Monoclonal Antibody

Synonyms: CALU; CALU_HUMAN; Calumenin 1; Calumenin 2; Calumenin; Crocalbin; crocalbin-like protein; FLJ90608; IEF SSP 9302; multiple EF-hand protein; OTTHUMP00000212712; OTTHUMP00000212713; OTTHUMP00000212714; OTTHUMP00000212715.

UNIPROT ID: O43852

Background: The product of this gene is a calcium-binding protein localized in the endoplasmic reticulum (ER) and it is involved in such ER functions as protein folding and sorting. This protein belongs to a family of multiple EF-hand proteins (CERC) that include reticulocalbin, ERC-55, and Cab45 and the product of this gene. Alternatively spliced transcript variants encoding different isoforms have been identified. [provided by RefSeq, Oct 2008]

Immunogen: A synthetic peptide of human Calumenin

Applications: WB,IHC-P

Recommended Dilutions: WB: 1/500-1/1000 IHC: 1/50-1/100

Host Species: Rabbit

Clonality: Rabbit Monoclonal

Clone ID: R05-1E7

MW: Calculated MW: 37 kDa; Observed MW: 47 kDa

Isotype: IgG

Purification: Affinity Purified

Species Reactivity: Human,Rat

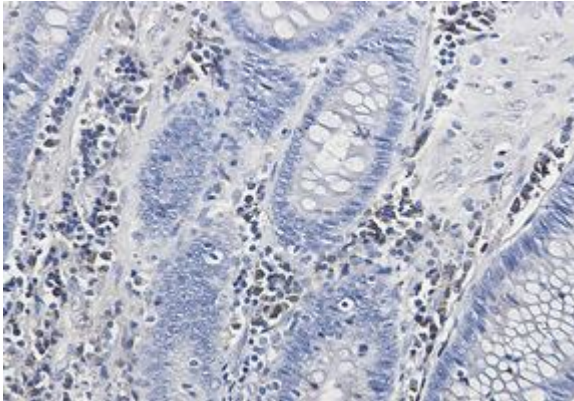
Conjugation: Unconjugated

Modification: Unmodified

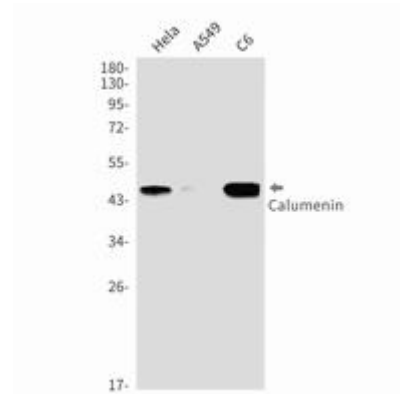
Constituents: PBS (without Mg²⁺ and Ca²⁺), pH 7.3 containing 50% glycerol, 0.5% BSA and 0.02% sodium azide

Research Areas: Tags & Cell Markers

Storage & Shipping: Store at -20°C. Avoid repeated freezing and thawing



Immunohistochemistry analysis of paraffin-embedded Human colon cancer using Calumenin antibody. High-pressure and temperature Sodium Citrate pH 6.0 was used for antigen retrieval.



Western blot analysis of Calumenin in HeLa, A549, C6 lysates using Calumenin antibody.