

CAMK1 RABBIT PAB

Cat.#: S210184

Product Name: Anti-CAMK1 Rabbit Polyclonal Antibody

Synonyms: CAMK1

UNIPROT ID: Q14012 (Gene Accession - BC106755)

Background: Calcium/calmodulin-dependent protein kinase I is expressed in many tissues and is a component of a calmodulin-dependent protein kinase cascade. Calcium/calmodulin directly activates calcium/calmodulin-dependent protein kinase I by binding to the enzyme and indirectly promotes the phosphorylation and synergistic activation of the enzyme by calcium/calmodulin-dependent protein kinase I kinase.

Immunogen: Fusion protein of human CAMK1

Applications: ELISA, IHC

Recommended Dilutions: IHC: Oct-50; ELISA: 1000-5000

Host Species: Rabbit

Clonality: Rabbit Polyclonal

Isotype: Immunogen-specific rabbit IgG

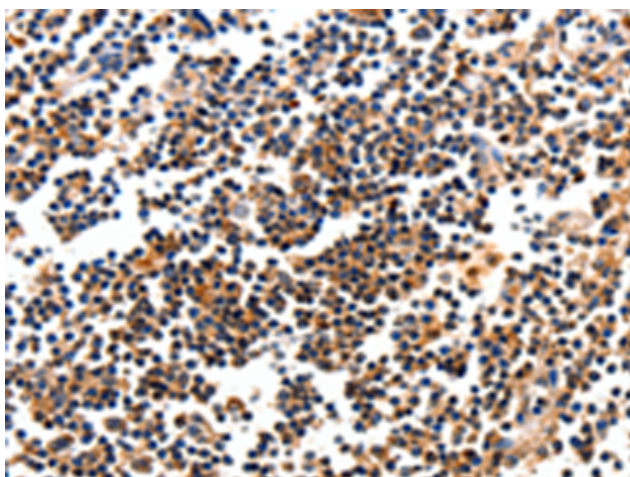
Purification: Antigen affinity purification

Species Reactivity: Human, Mouse, Rat

Constituents: PBS (without Mg²⁺ and Ca²⁺), pH 7.4, 150 mM NaCl, 0.05% Sodium Azide and 40% glycerol

Research Areas: Signal Transduction, Neuroscience, Cardiovascular

Storage & Shipping: Store at -20°C. Avoid repeated freezing and thawing



Immunohistochemistry analysis of paraffin embedded Human tonsil tissue using 210184(CAMK1 Antibody) at a dilution of 1/10(Cytoplasm, Nucleus).



In comparison with the IHC on the left, the same paraffin-embedded Human tonsil tissue is first treated with the fusion protein and then with 210184(Anti-CAMK1 Antibody) at dilution 1/10.