

## CAMK2B RABBIT PAB

**Cat.#:** S216386

**Product Name:** Anti-CAMK2B Rabbit Polyclonal Antibody

**Synonyms:** CAM2; CAMK2; CAMKB; MRD54; CaMKIIbeta

**UNIPROT ID:** Q13554 (Gene Accession - BC019070 )

**Background:** The product of this gene belongs to the serine/threonine protein kinase family and to the Ca(2+)/calmodulin-dependent protein kinase subfamily. Calcium signaling is crucial for several aspects of plasticity at glutamatergic synapses. In mammalian cells, the enzyme is composed of four different chains: alpha, beta, gamma, and delta. The product of this gene is a beta chain. It is possible that distinct isoforms of this chain have different cellular localizations and interact differently with calmodulin. Alternative splicing results in multiple transcript variants. [provided by RefSeq, May 2014]

**Immunogen:** Fusion protein of human CAMK2B

**Applications:** ELISA, WB, IHC

**Recommended Dilutions:** IHC: 50-200;WB: 1000-5000;ELISA: 5000-10000

**Host Species:** Rabbit

**Clonality:** Rabbit Polyclonal

**Isotype:** Immunogen-specific rabbit IgG

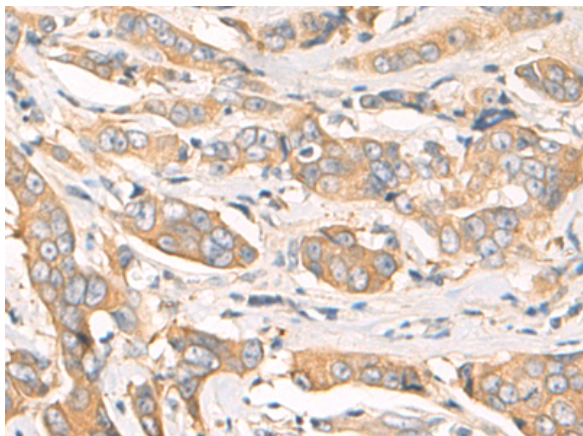
**Purification:** Antigen affinity purification

**Species Reactivity:** Human, Mouse, Rat

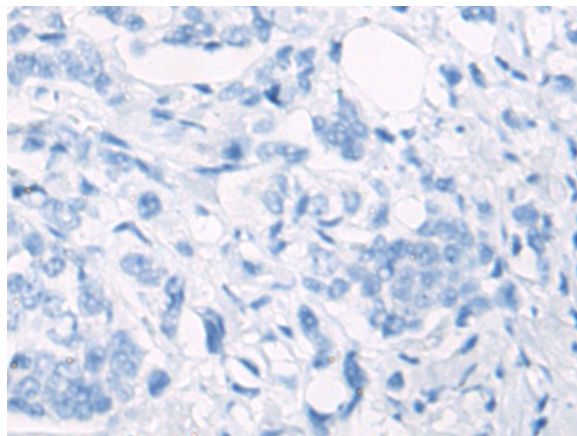
**Constituents:** PBS (without Mg<sup>2+</sup> and Ca<sup>2+</sup>), pH 7.4, 150 mM NaCl, 0.05% Sodium Azide and 40% glycerol

**Research Areas:** Signal Transduction, Neuroscience, Cardiovascular

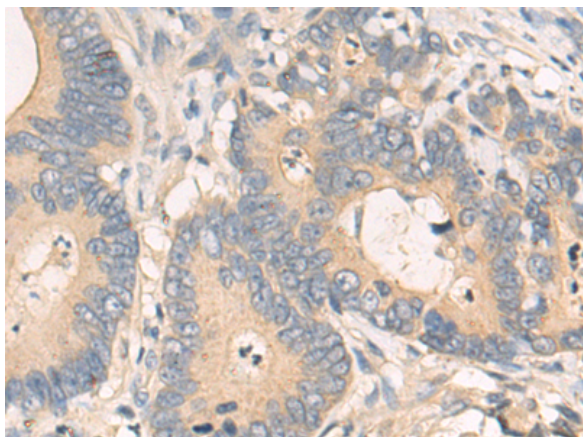
**Storage & Shipping:** Store at -20°C. Avoid repeated freezing and thawing



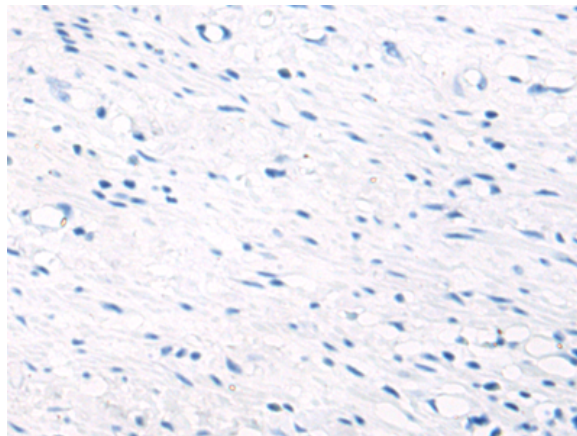
Immunohistochemistry analysis of paraffin embedded Human breast cancer tissue using 216386 (CAMK2B Antibody) at a dilution of 1/70 (Cyttoplasm).



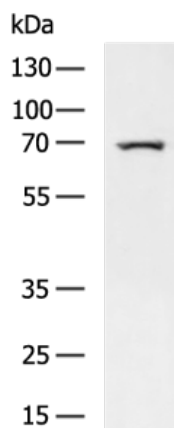
In comparison with the IHC on the left, the same paraffin-embedded Human breast cancer tissue is first treated with the fusion protein and then with 216386 (Anti-CAMK2B Antibody) at dilution 1/70.



The image on the left is immunohistochemistry of paraffin-embedded Human colorectal cancer tissue using 216386 (Anti-CAMK2B Antibody) at a dilution of 1/70.



In comparison with the IHC on the left, the same paraffin-embedded Human colorectal cancer tissue is first treated with fusion protein and then with D220336 (Anti-CAMK2B Antibody) at dilution 1/70.



Gel: 8%SDS-PAGE, Lysate: 40 µg;  
Lane: HepG2 cell lysate;  
Primary antibody: 216386 (CAMK2B Antibody) at dilution 1/1000;  
Secondary antibody: HRP-conjugated Goat anti rabbit IgG at 1/5000 dilution;  
Exposure time: 15 seconds



# Product Description

Pioneering GTPase and Oncogene Product Development since 2010

---