

CAMSAP1 RABBIT PAB

Cat.#: S215436

Product Name: Anti-CAMSAP1 Rabbit Polyclonal Antibody

Synonyms:

UNIPROT ID: Q5T5Y3 (Gene Accession - NP_056262)

Background: Probable microtubule-binding protein that plays a role in the regulation of cell morphology and cytoskeletal organization. Through interaction with spectrin may regulate neurite outgrowth.

Immunogen: Synthetic peptide of human CAMSAP1

Applications: ELISA, IHC

Recommended Dilutions: IHC: 25-100; ELISA: 5000-10000

Host Species: Rabbit

Clonality: Rabbit Polyclonal

Isotype: Immunogen-specific rabbit IgG

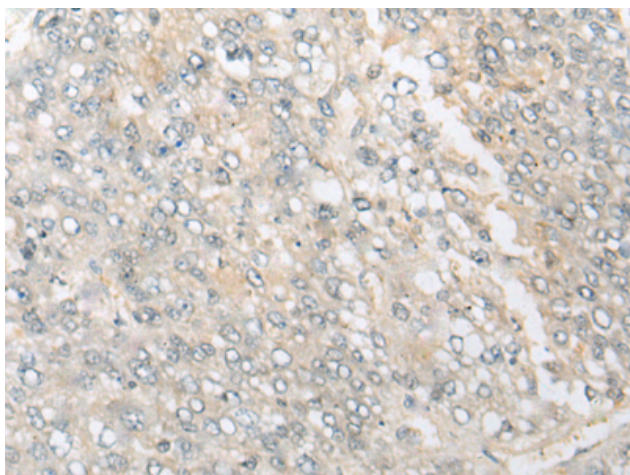
Purification: Antigen affinity purification

Species Reactivity: Human, Mouse, Rat

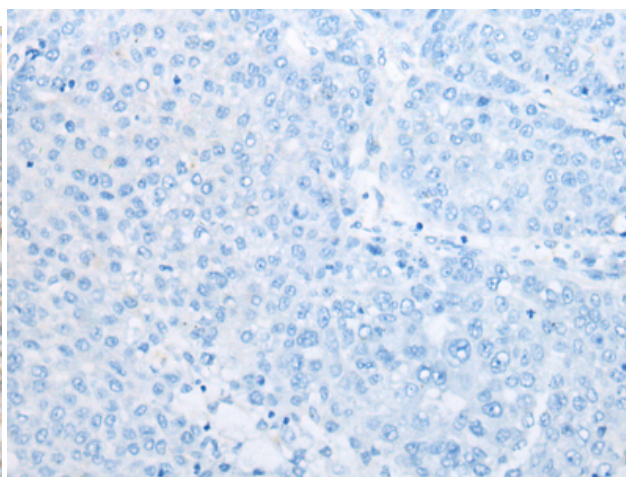
Constituents: PBS (without Mg²⁺ and Ca²⁺), pH 7.4, 150 mM NaCl, 0.05% Sodium Azide and 40% glycerol

Research Areas: Stem Cells

Storage & Shipping: Store at -20°C. Avoid repeated freezing and thawing



Immunohistochemistry analysis of paraffin embedded Human liver cancer tissue using 215436(CAMSAP1 Antibody) at a dilution of 1/40(Cytoplasm).



In comparison with the IHC on the left, the same paraffin-embedded Human liver cancer tissue is first treated with the synthetic peptide and then with 215436(Anti-CAMSAP1 Antibody) at dilution 1/40.