

CAMTA1 RABBIT PAB

Cat.#: S214204

Product Name: Anti-CAMTA1 Rabbit Polyclonal Antibody

Synonyms: CECBA; CANPMR

UNIPROT ID: Q9Y6Y1 (Gene Accession - NP_001182492)

Background: The protein encoded by this gene contains a CGI DNA-binding domain, a transcription factor immunoglobulin domain, ankyrin repeats, and calmodulin-binding IQ motifs. The encoded protein is thought to be a transcription factor and may be a tumor suppressor. However, a translocation event is sometimes observed between this gene and the WWTR1 gene, with the resulting WWTR1-CAMTA1 oncoprotein leading to epithelioid hemangioendothelioma, a malignant vascular cancer.

Immunogen: Synthetic peptide of human CAMTA1

Applications: ELISA, IHC

Recommended Dilutions: IHC: 50-200; ELISA: 5000-10000

Host Species: Rabbit

Clonality: Rabbit Polyclonal

Isotype: Immunogen-specific rabbit IgG

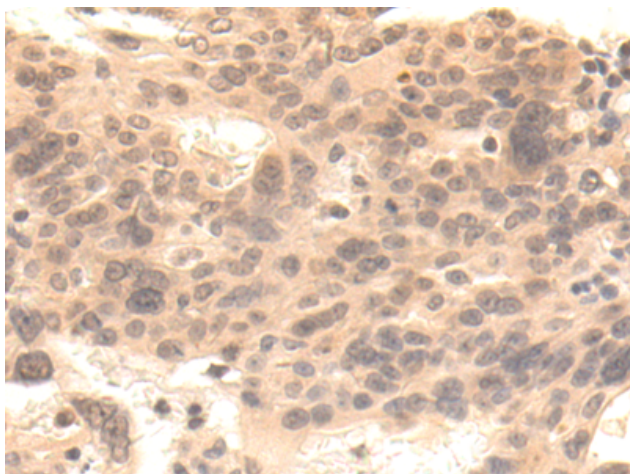
Purification: Antigen affinity purification

Species Reactivity: Human, Mouse

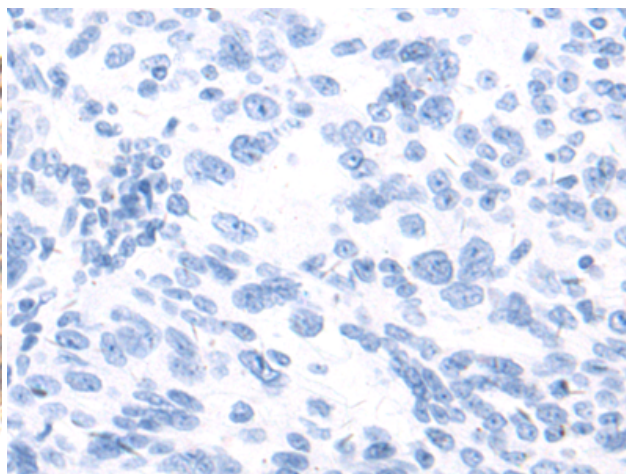
Constituents: PBS (without Mg²⁺ and Ca²⁺), pH 7.4, 150 mM NaCl, 0.05% Sodium Azide and 40% glycerol

Research Areas: Epigenetics and Nuclear Signaling, Cancer

Storage & Shipping: Store at -20°C. Avoid repeated freezing and thawing



Immunohistochemistry analysis of paraffin embedded Human breast cancer tissue using 214204(CAMTA1 Antibody) at a dilution of 1/50(Cytoplasm and Nucleus).



In comparison with the IHC on the left, the same paraffin-embedded Human breast cancer tissue is first treated with the synthetic peptide and then with 214204(Anti-CAMTA1 Antibody) at dilution 1/50.