

CAP1 RABBIT PAB

Cat.#: N226018

Product Name: Anti-CAP1 Rabbit pAb

Synonyms: CAP; CAP1-PEN

UNIPROT ID: Q01518

Background: Directly regulates filament dynamics and has been implicated in a number of complex developmental and morphological processes, including mRNA localization and the establishment of cell polarity.

Immunogen: A synthetic peptide of human CAP1

Applications: WB,IHC-F,IHC-P,ICC/IF,IP

Recommended Dilutions: WB: 1/500-1/1000 IHC: 1/50-1/100 IF: 1/50-1/200 IP: 1/20

Host Species: Rabbit

Clonality: Rabbit Polyclonal

Clone ID: -

MW: Calculated MW: 52 kDa; Observed MW: 56 kDa

Isotype: IgG

Purification: Affinity Purified

Species Reactivity: Human

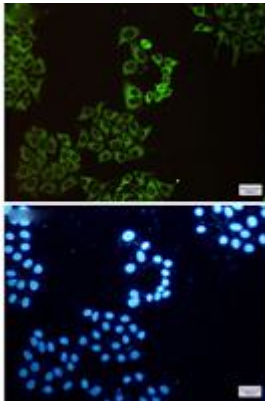
Conjugation: Unconjugated

Modification: Unmodified

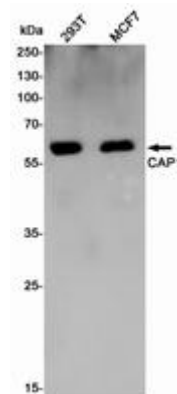
Constituents: PBS (without Mg²⁺ and Ca²⁺), pH 7.3 containing 50% glycerol, 0.5% BSA and 0.02% sodium azide

Research Areas: Signal Transduction

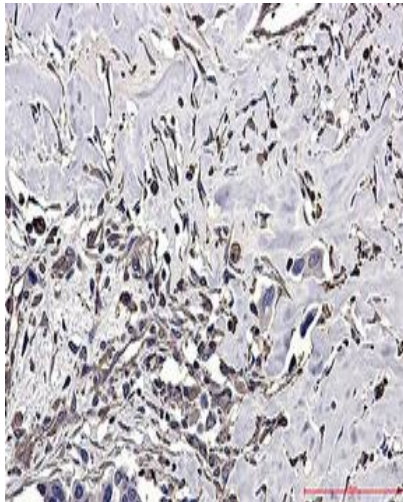
Storage & Shipping: Store at -20°C. Avoid repeated freezing and thawing



Immunocytochemistry analysis of CAP1 (green) in Hela using CAP1 antibody, and DAPI (blue)



Western blot analysis of CAP1 in 293T, MCF-7 lysates using CAP1 antibody.



Immunohistochemistry analysis of paraffin-embedded Human Cholangiocarcinoma using CAP1 antibody. High-pressure and temperature Sodium Citrate pH 6.0 was used for antigen retrieval.