

## CAP2 RABBIT MAB

**Cat.#:** N263133

**Product Name:** Anti-CAP2 Rabbit Monoclonal Antibody

**Synonyms:** CAP 2; Adenylyl cyclase-associated protein 2

**UNIPROT ID:** P40123

**Background:** May have a regulatory bifunctional role.

**Immunogen:** A synthetic peptide of human CAP2

**Applications:** WB,IP

**Recommended Dilutions:** WB: 1/500-1/1000 IP: 1/20

**Host Species:** Rabbit

**Clonality:** Rabbit Monoclonal

**Clone ID:** R04-3D1

**MW:** Calculated MW: 53 kDa; Observed MW: 53 kDa

**Isotype:** IgG

**Purification:** Affinity Purified

**Species Reactivity:** Human

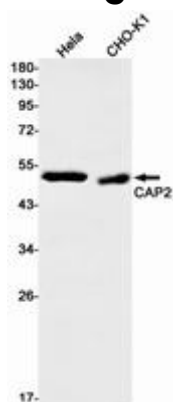
**Conjugation:** Unconjugated

**Modification:** Unmodified

**Constituents:** PBS (without Mg<sup>2+</sup> and Ca<sup>2+</sup>), pH 7.3 containing 50% glycerol, 0.5% BSA and 0.02% sodium azide

**Research Areas:** Signal Transduction

**Storage & Shipping:** Store at -20°C. Avoid repeated freezing and thawing



Western blot analysis of CAP2 in HeLa, CHO-K1 lysates using CAP2 antibody.