

CAPN14 RABBIT PAB

Cat.#: S221669

Product Name: Anti-CAPN14 Rabbit Polyclonal Antibody

Synonyms:

UNIPROT ID: A8MX76 (Gene Accession - NP_001138594)

Background: Calpains are a family of cytosolic calcium-activated cysteine proteases involved in a variety of cellular processes including apoptosis, cell division, modulation of integrin-cytoskeletal interactions, and synaptic plasticity (Dear et al., 2000 [PubMed 10964513]). CAPN14 belongs to the calpain large subunit family.

Immunogen: Synthetic peptide of human CAPN14

Applications: ELISA, WB, IHC

Recommended Dilutions: IHC: 50-100;WB: 500-2000;ELISA: 5000-10000

Host Species: Rabbit

Clonality: Rabbit Polyclonal

Isotype: Immunogen-specific rabbit IgG

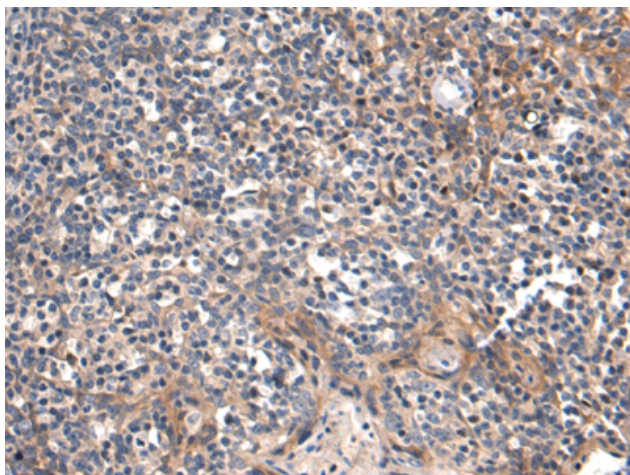
Purification: Antigen affinity purification

Species Reactivity: Human

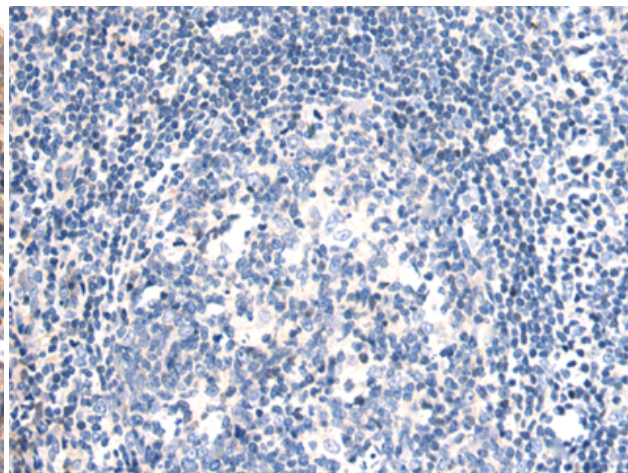
Constituents: PBS (without Mg²⁺ and Ca²⁺), pH 7.4, 150 mM NaCl, 0.05% Sodium Azide and 40% glycerol

Research Areas: Cell Biology, Neuroscience

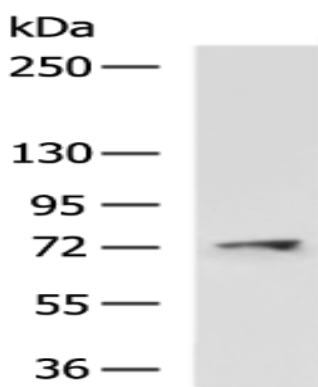
Storage & Shipping: Store at -20°C. Avoid repeated freezing and thawing



Immunohistochemistry analysis of paraffin embedded Human tonsil tissue using 221669(CAPN14 Antibody) at a dilution of 1/60(Cytoplasm).



In comparison with the IHC on the left, the same paraffin-embedded Human tonsil tissue is first treated with the synthetic peptide and then with 221669(Anti-CAPN14 Antibody) at dilution 1/60.



Gel: 6%SDS-PAGE, Lysate: 40 μ g;
Lane: Human cerebrum tissue lysate;
Primary antibody: 221669(CAPN14 Antibody) at dilution 1/600;
Secondary antibody: HRP-conjugated Goat anti rabbit IgG at 1/5000 dilution;
Exposure time: 15 seconds