

## CAPN5 RABBIT PAB

**Cat.#:** S216383

**Product Name:** Anti-CAPN5 Rabbit Polyclonal Antibody

**Synonyms:** VRNI; ADNIV; HTRA3; nCL-3

**UNIPROT ID:** O15484 (Gene Accession - BC018123 )

**Background:** Calpains are calcium-dependent cysteine proteases involved in signal transduction in a variety of cellular processes. A functional calpain protein consists of an invariant small subunit and 1 of a family of large subunits. CAPN5 is one of the large subunits. Unlike some of the calpains, CAPN5 and CAPN6 lack a calmodulin-like domain IV. Because of the significant similarity to *Caenorhabditis elegans* sex determination gene *tra-3*, CAPN5 is also called as HTRA3.

**Immunogen:** Fusion protein of human CAPN5

**Applications:** ELISA, WB, IHC

**Recommended Dilutions:** IHC: 50-200;WB: 500-2000;ELISA: 5000-10000

**Host Species:** Rabbit

**Clonality:** Rabbit Polyclonal

**Isotype:** Immunogen-specific rabbit IgG

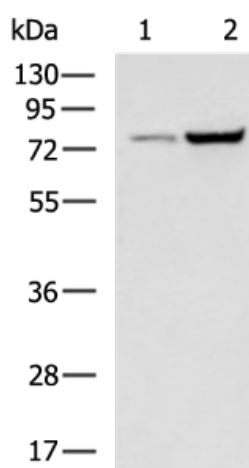
**Purification:** Antigen affinity purification

**Species Reactivity:** Human, Mouse, Rat

**Constituents:** PBS (without Mg<sup>2+</sup> and Ca<sup>2+</sup>), pH 7.4, 150 mM NaCl, 0.05% Sodium Azide and 40% glycerol

**Research Areas:** Signal Transduction, Cell Biology

**Storage & Shipping:** Store at -20°C. Avoid repeated freezing and thawing



Immunohistochemistry analysis of paraffin-embedded Human liver cancer tissue using 216383(CAPN5 Antibody) at a dilution of 1/50(Cytoplasm).

Gel: 8%SDS-PAGE, Lysate: 40 µg;  
Lane 1-2: A431 and SKOV3 cell lysates;  
Primary antibody: 216383(CAPN5 Antibody) at dilution 1/400;  
Secondary antibody: HRP-conjugated Goat anti rabbit IgG at 1/5000 dilution;  
Exposure time: 20 seconds