

## CAPS RABBIT PAB

**Cat.#:** S221666

**Product Name:** Anti-CAPS Rabbit Polyclonal Antibody

**Synonyms:** CAPS1

**UNIPROT ID:** Q13938

**Background:** This gene encodes a calcium-binding protein, which may play a role in the regulation of ion transport. A similar protein was first described as a potentially important regulatory protein in the dog thyroid and was termed as R2D5 antigen in rabbit. Alternative splicing of this gene generates two transcript variants.

**Immunogen:** Synthetic peptide of human CAPS

**Applications:** ELISA, WB, IHC

**Recommended Dilutions:** IHC: 20-100;WB: 200-1000;ELISA: 2000-5000

**Host Species:** Rabbit

**Clonality:** Rabbit Polyclonal

**Isotype:** Immunogen-specific rabbit IgG

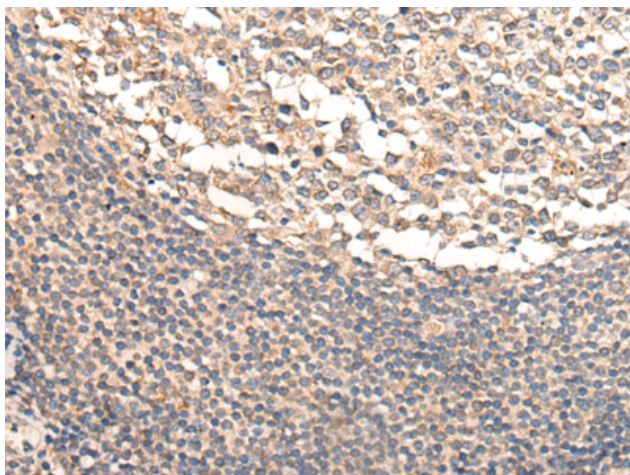
**Purification:** Antigen affinity purification

**Species Reactivity:** Human

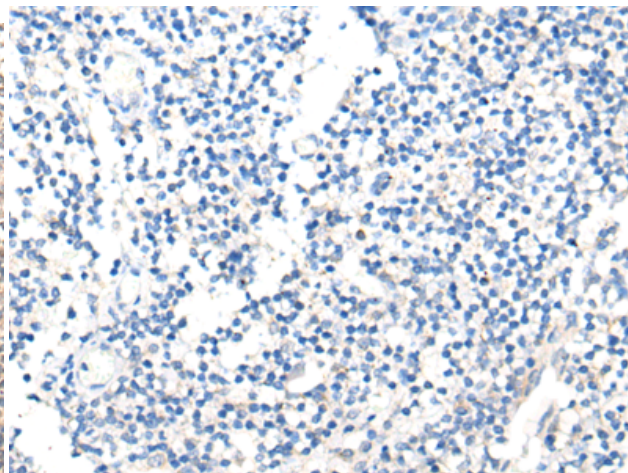
**Constituents:** PBS (without Mg<sup>2+</sup> and Ca<sup>2+</sup>), pH 7.4, 150 mM NaCl, 0.05% Sodium Azide and 40% glycerol

**Research Areas:** Signal Transduction

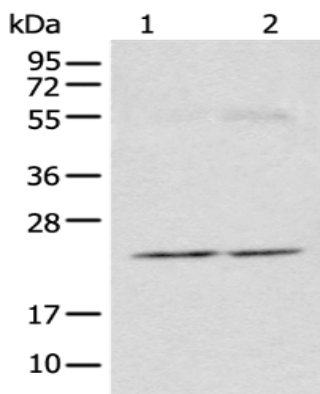
**Storage & Shipping:** Store at -20°C. Avoid repeated freezing and thawing



Immunohistochemistry analysis of paraffin embedded Human tonsil tissue using 221666(CAPS Antibody) at a dilution of 1/25(Cytoplasm).



In comparison with the IHC on the left, the same paraffin-embedded Human tonsil tissue is first treated with the synthetic peptide and then with 221666(Anti-CAPS Antibody) at dilution 1/25.



Gel: 12%SDS-PAGE, Lysate: 40  $\mu$ g;  
 Lane 1-2: Human pancreas tissue and Human kidney tissue lysates;  
 Primary antibody: 221666(CAPS Antibody) at dilution 1/200;  
 Secondary antibody: Goat anti rabbit IgG at 1/8000 dilution;  
 Exposure time: 90 seconds