

## CAPS2 RABBIT PAB

**Cat.#:** S218147

**Product Name:** Anti-CAPS2 Rabbit Polyclonal Antibody

**Synonyms:** UG0636c06

**UNIPROT ID:** Q9BXY5 (Gene Accession - BC131724 )

**Background:** Calcyphosine-2 is a calcium-binding protein with 2 EF-hand motifs (Wang et al., 2002 [PubMed 11846421]).

**Immunogen:** Fusion protein of human CAPS2

**Applications:** ELISA, IHC

**Recommended Dilutions:** IHC: 25-100; ELISA: 5000-10000

**Host Species:** Rabbit

**Clonality:** Rabbit Polyclonal

**Isotype:** Immunogen-specific rabbit IgG

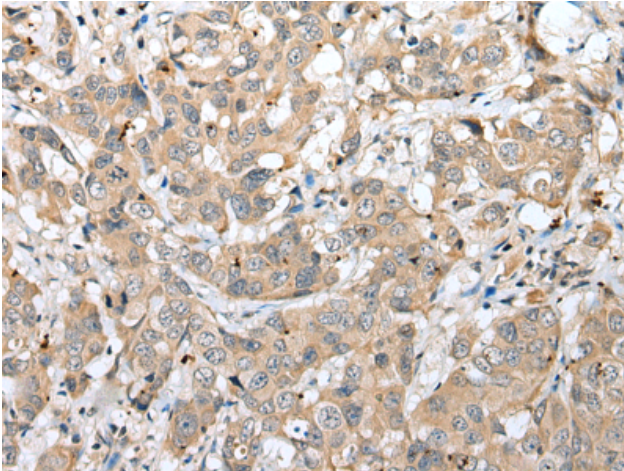
**Purification:** Antigen affinity purification

**Species Reactivity:** Human

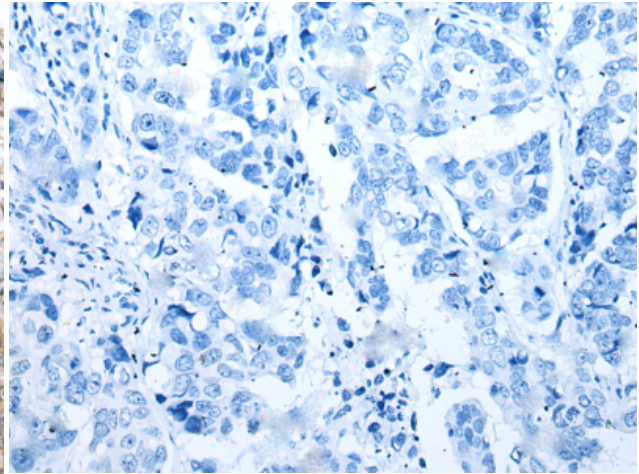
**Constituents:** PBS (without Mg<sup>2+</sup> and Ca<sup>2+</sup>), pH 7.4, 150 mM NaCl, 0.05% Sodium Azide and 40% glycerol

**Research Areas:** Neuroscience

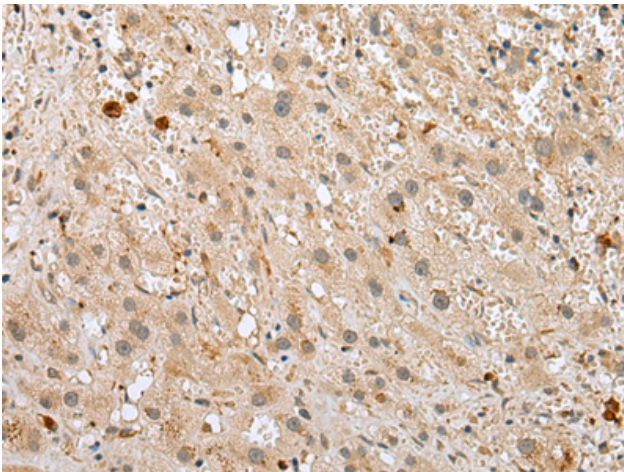
**Storage & Shipping:** Store at -20°C. Avoid repeated freezing and thawing



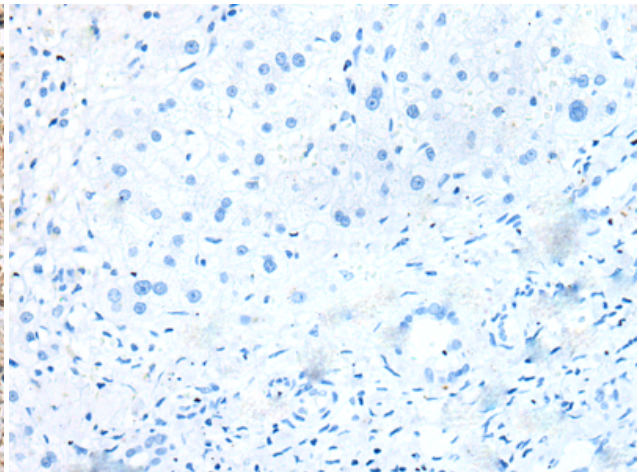
Immunohistochemistry analysis of paraffin embedded Human breast cancer tissue using 218147 (CAPS2 Antibody) at a dilution of 1/30 (Cytoplasm).



In comparison with the IHC on the left, the same paraffin-embedded Human breast cancer tissue is first treated with the fusion protein and then with 218147 (Anti-CAPS2 Antibody) at dilution 1/30.



The image on the left is immunohistochemistry of paraffin-embedded Human liver cancer tissue using 218147 (Anti-CAPS2 Antibody) at a dilution of 1/30.



In comparison with the IHC on the left, the same paraffin-embedded Human liver cancer tissue is first treated with fusion protein and then with D223822 (Anti-CAPS2 Antibody) at dilution 1/30.