

## CAPZA2 RABBIT PAB

**Cat.#:** S217237

**Product Name:** Anti-CAPZA2 Rabbit Polyclonal Antibody

**Synonyms:** CAPZ; CAPPA2

**UNIPROT ID:** P47755 (Gene Accession - BC005338 )

**Background:** The protein encoded by this gene is a member of the F-actin capping protein alpha subunit family. It is the alpha subunit of the barbed-end actin binding protein Cap Z. By capping the barbed end of actin filaments, Cap Z regulates the growth of the actin filaments at the barbed end.

**Immunogen:** Fusion protein of human CAPZA2

**Applications:** ELISA, WB, IHC

**Recommended Dilutions:** IHC: 25-100;WB: 500-2000;ELISA: 2000-5000

**Host Species:** Rabbit

**Clonality:** Rabbit Polyclonal

**Isotype:** Immunogen-specific rabbit IgG

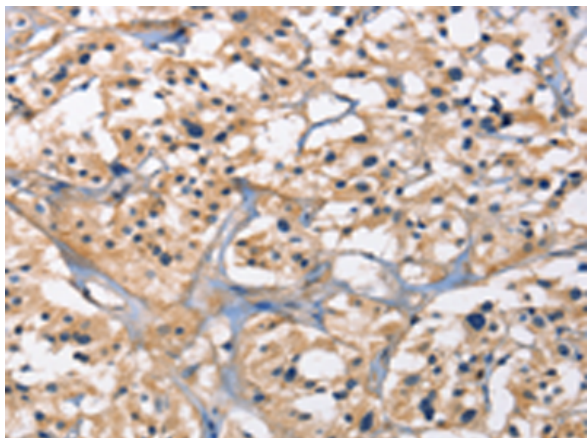
**Purification:** Antigen affinity purification

**Species Reactivity:** Human, Mouse, Rat

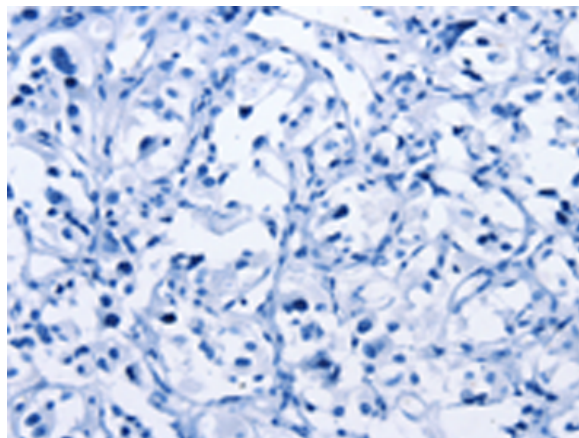
**Constituents:** PBS (without Mg<sup>2+</sup> and Ca<sup>2+</sup>), pH 7.4, 150 mM NaCl, 0.05% Sodium Azide and 40% glycerol

**Research Areas:** Signal Transduction

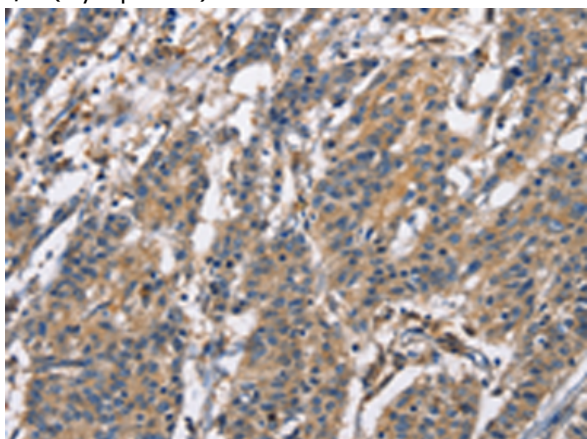
**Storage & Shipping:** Store at -20°C. Avoid repeated freezing and thawing



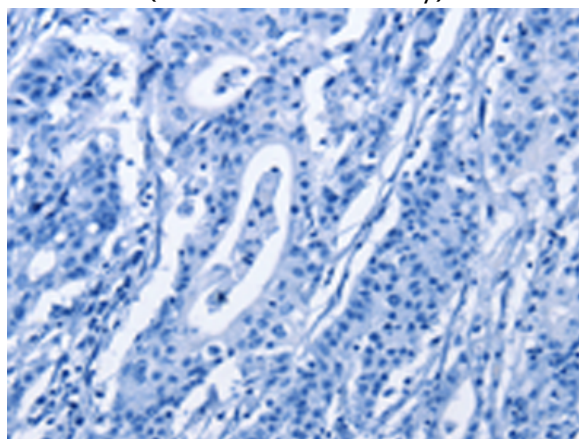
Immunohistochemistry analysis of paraffin embedded Human thyroid cancer tissue using 217237(CAPZA2 Antibody) at a dilution of 1/15(Cytoplasm).



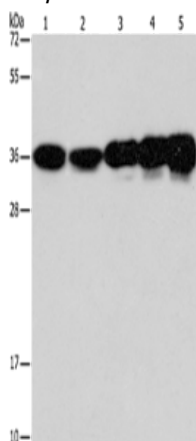
In comparison with the IHC on the left, the same paraffin-embedded Human thyroid cancer tissue is first treated with the fusion protein and then with 217237(Anti-CAPZA2 Antibody) at dilution 1/15.



The image on the left is immunohistochemistry of paraffin-embedded Human gastric cancer tissue using 217237(Anti-CAPZA2 Antibody) at a dilution of 1/15.



In comparison with the IHC on the left, the same paraffin-embedded Human gastric cancer tissue is first treated with fusion protein and then with D222025(Anti-CAPZA2 Antibody) at dilution 1/15.



Gel: 15%SDS-PAGE, Lysate: 40 µg;  
 Lane 1-5: Lovo cells, hela cells, NIH/3T3 cells,  
 mouse liver tissue, Mouse muscle tissue;  
 Primary antibody: 217237(CAPZA2 Antibody) at  
 dilution 1/300;  
 Secondary antibody: Goat anti rabbit IgG at  
 1/8000 dilution;  
 Exposure time: 1 minute



# Product Description

Pioneering GTPase and Oncogene Product Development since 2010

---