

CARD16 RABBIT PAB

Cat.#: S221761

Product Name: Anti-CARD16 Rabbit Polyclonal Antibody

Synonyms: COP; COP1; PSEUDO-ICE

UNIPROT ID: Q5EG05 (Gene Accession - NP_001017534)

Background: Caspase inhibitor. Acts as a regulator of procaspase-1/CASP1 activation implicated in the regulation of the proteolytic maturation of pro-interleukin-1 beta (IL1B) and its release during inflammation. Inhibits the release of IL1B in response to LPS in monocytes. Also induces NF-kappa-B activation during the pro-inflammatory cytokine response. Also able to inhibit CASP1-mediated neuronal cell death, TNF-alpha, hypoxia-, UV-, and staurosporine-mediated cell death but not ER stress-mediated cell death. Acts by preventing activation of caspases CASP1 and CASP4, possibly by preventing the interaction between CASP1 and RIPK2.

Immunogen: Synthetic peptide of human CARD16

Applications: ELISA, WB, IHC

Recommended Dilutions: IHC: 25-100;WB: 200-1000;ELISA: 5000-10000

Host Species: Rabbit

Clonality: Rabbit Polyclonal

Isotype: Immunogen-specific rabbit IgG

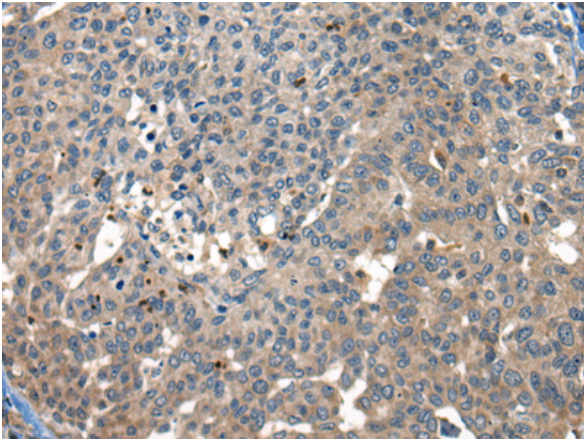
Purification: Antigen affinity purification

Species Reactivity: Human

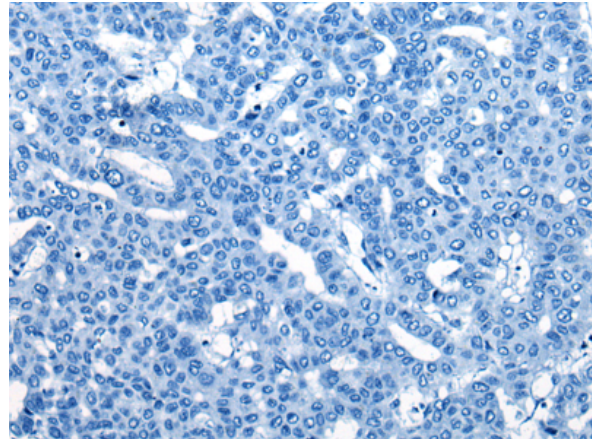
Constituents: PBS (without Mg²⁺ and Ca²⁺), pH 7.4, 150 mM NaCl, 0.05% Sodium Azide and 40% glycerol

Research Areas: Cancer

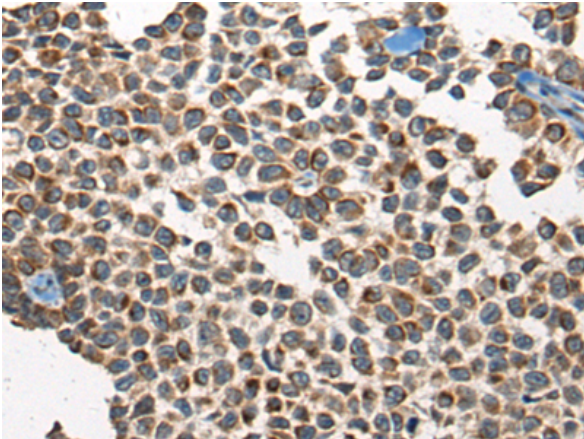
Storage & Shipping: Store at -20°C. Avoid repeated freezing and thawing



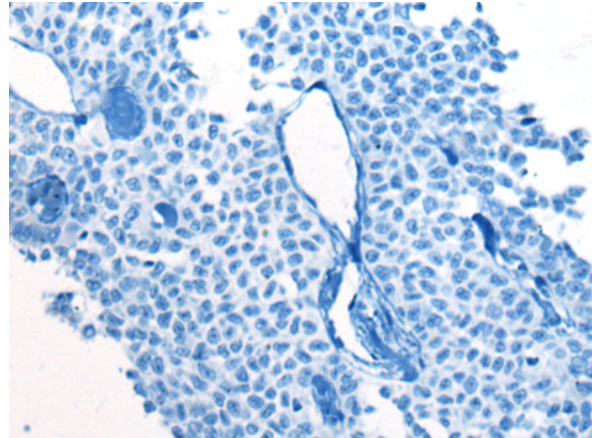
Immunohistochemistry analysis of paraffin embedded Human liver cancer tissue using 221761(CARD16 Antibody) at a dilution of 1/25(Cytoplasm).



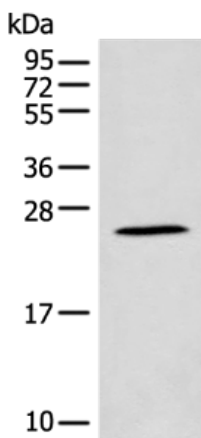
In comparison with the IHC on the left, the same paraffin-embedded Human liver cancer tissue is first treated with the synthetic peptide and then with 221761(Anti-CARD16 Antibody) at dilution 1/25.



The image on the left is immunohistochemistry of paraffin-embedded Human ovarian cancer tissue using 221761(Anti-CARD16 Antibody) at a dilution of 1/25.



In comparison with the IHC on the left, the same paraffin-embedded Human ovarian cancer tissue is first treated with synthetic peptide and then with D263494(Anti-CARD16 Antibody) at dilution 1/25.



Gel: 12%SDS-PAGE, Lysate: 40 µg;
Lane: HEPG2 cell lysate;
Primary antibody: 221761(CARD16 Antibody) at dilution 1/400;
Secondary antibody: Goat anti rabbit IgG at 1/8000 dilution;
Exposure time: 60 seconds



Product Description

Pioneering GTPase and Oncogene Product Development since 2010
