

## CARDIAC TROPONIN I (1D7) MOUSE MAB

**Cat.#:** N261481

**Product Name:** Anti-Cardiac Troponin I (1D7) Mouse Monoclonal Antibody

**Synonyms:** TNNI3; TNNC1; Troponin I; cardiac muscle; Cardiac troponin I

**UNIPROT ID:** P19429

**Background:** Troponin I (TnI) is one of 3 subunits that form the troponin complex of the thin filaments of striated muscle; see also TNNI1 (MIM 191042). The others are troponin T (TnT; see MIM 191041) and troponin C (TnC; see MIM 191040).

**Immunogen:** Synthetic peptides corresponding to the sequence of human Cardiac Troponin I.

**Applications:** WB,ELISA

**Recommended Dilutions:** WB: 1/500-1/1000 ELISA: 1/10000

**Host Species:** Mouse

**Clonality:** Mouse Monoclonal

**Clone ID:** 1D7-D10

**MW:** Calculated MW: 24 kDa; Observed MW: 28 kDa

**Isotype:** IgG2a

**Purification:** Affinity Purified

**Species Reactivity:** Human,Mouse,Rat

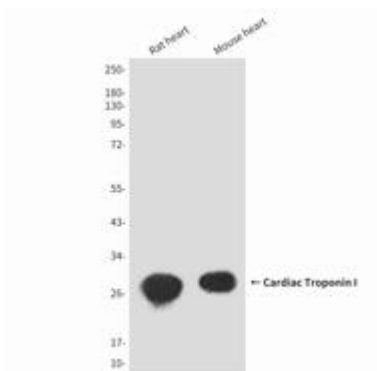
**Conjugation:** Unconjugated

**Modification:** Unmodified

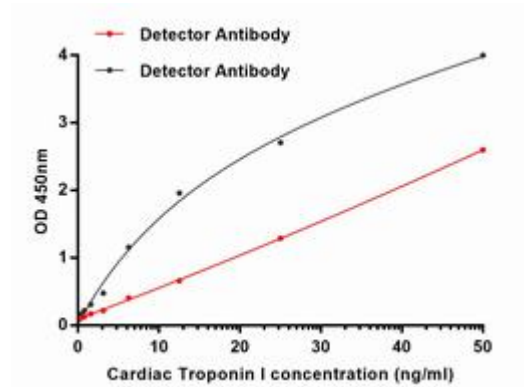
**Constituents:** PBS (without Mg<sup>2+</sup> and Ca<sup>2+</sup>), pH 7.3 containing 50% glycerol, 0.5% BSA and 0.02% sodium azide

**Research Areas:** Signal Transduction

**Storage & Shipping:** Store at -20°C. Avoid repeated freezing and thawing



Western blot analysis of Cardiac Troponin I (1D7) in rat and mouse heart lysates using Cardiac Troponin I (1D7) antibody



sELISA standard Curve for Cardiac Troponin I: Capture antibody to Cardiac Troponin I at 2ug/ml and 2012951D7(1D7D) was used for detecting.