

CASEIN KINASE 1 ALPHA RABBIT MAB

Cat.#: N261957

Product Name: Anti-Casein Kinase 1 alpha Rabbit Monoclonal Antibody

Synonyms: CSNK1A1; Casein kinase I isoform alpha; CKI-alpha; CK1

UNIPROT ID: P48729

Background: Casein kinases are operationally defined by their preferential utilization of acidic proteins such as caseins as substrates. It can phosphorylate a large number of proteins. Participates in Wnt signaling. Phosphorylates CTNNB1 at 'Ser-45'. May play a role in segregating chromosomes during mitosis.

Immunogen: A synthetic peptide of human Casein Kinase 1 alpha

Applications: WB,IP

Recommended Dilutions: WB: 1/500-1/1000 IP: 1/20

Host Species: Rabbit

Clonality: Rabbit Monoclonal

Clone ID: R05-6C6

MW: Calculated MW: 39 kDa; Observed MW: 34 kDa

Isotype: IgG

Purification: Affinity Purified

Species Reactivity: Human,Rat

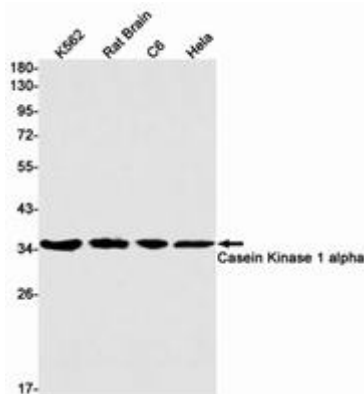
Conjugation: Unconjugated

Modification: Unmodified

Constituents: PBS (without Mg²⁺ and Ca²⁺), pH 7.3 containing 50% glycerol, 0.5% BSA and 0.02% sodium azide

Research Areas: Signal Transduction

Storage & Shipping: Store at -20°C. Avoid repeated freezing and thawing



Western blot analysis of Casein Kinase 1 alpha in K562, rat Brain, C6, HeLa lysates using Casein Kinase 1 alpha antibody.