

CASEIN KINASE 2 BETA RABBIT MAB

Cat.#: N263250

Product Name: Anti-Casein Kinase 2 beta Rabbit Monoclonal Antibody

Synonyms: CSNK2B; CK2N; G5A; Casein kinase II subunit beta; CK II beta; Phosvitin; Protein G5a

UNIPROT ID: P67870

Background: Participates in Wnt signaling (By similarity). Plays a complex role in regulating the basal catalytic activity of the alpha subunit.

Immunogen: A synthetic peptide of human Casein Kinase 2 beta

Applications: WB,IHC-F,IHC-P,ICC/IF

Recommended Dilutions: WB: 1/500-1/1000 IHC: 1/50-1/100 IF: 1/50-1/200

Host Species: Rabbit

Clonality: Rabbit Monoclonal

Clone ID: R01-5D5

MW: Calculated MW: 25 kDa; Observed MW: 25 kDa

Isotype: IgG

Purification: Affinity Purified

Species Reactivity: Human,Mouse,Rat

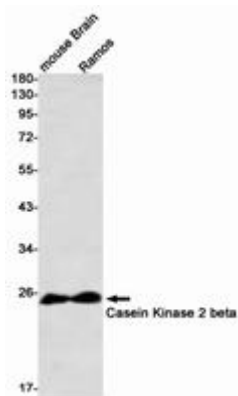
Conjugation: Unconjugated

Modification: Unmodified

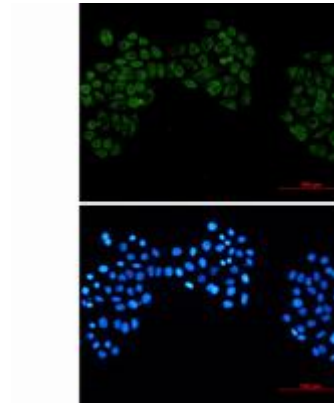
Constituents: PBS (without Mg²⁺ and Ca²⁺), pH 7.3 containing 50% glycerol, 0.5% BSA and 0.02% sodium azide

Research Areas: Cell Biology

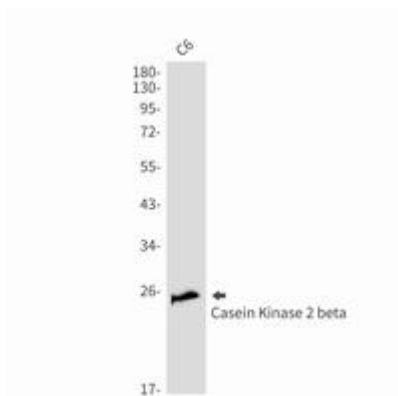
Storage & Shipping: Store at -20°C. Avoid repeated freezing and thawing



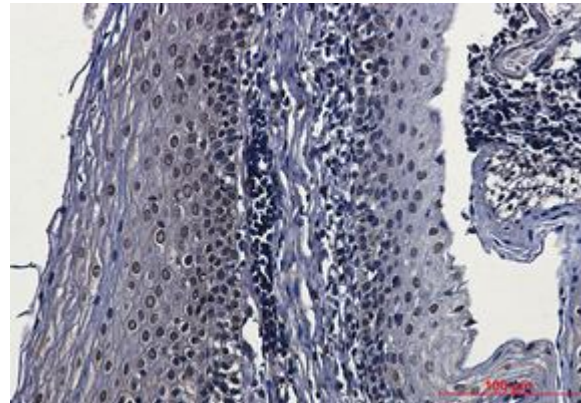
Western blot analysis of Casein Kinase 2 beta in mouse Brain, Ramos lysates using Casein Kinase 2 beta antibody



Immunocytochemistry analysis of Casein Kinase 2 beta (green) in Hela using Casein Kinase 2 beta antibody, and DAPI (blue).



Western blot analysis of Casein Kinase 2 beta in C6 lysates using Casein Kinase 2 beta antibody.



Immunohistochemistry analysis of paraffin-embedded Human tonsil using Casein Kinase 2 beta antibody. High-pressure and temperature Sodium Citrate pH 6.0 was used for antigen retrieval.