

CASP2 RABBIT PAB

Cat.#: S216254

Product Name: Anti-CASP2 Rabbit Polyclonal Antibody

Synonyms: ICHI, NEDD2, CASP-2, NEDD-2

UNIPROT ID: P42575 (Gene Accession - BC002427)

Background: This gene encodes a member of the cysteine-aspartic acid protease (caspase) family. Caspases mediate cellular apoptosis through the proteolytic cleavage of specific protein substrates. The encoded protein may function in stress-induced cell death pathways, cell cycle maintenance, and the suppression of tumorigenesis. Increased expression of this gene may play a role in neurodegenerative disorders including Alzheimer's disease, Huntington's disease and temporal lobe epilepsy. Alternatively spliced transcript variants encoding multiple isoforms have been observed for this gene.

Immunogen: Fusion protein of human CASP2

Applications: ELISA, WB, IHC

Recommended Dilutions: IHC: 100-300;WB: 1000-2000;ELISA: 1000-10000

Host Species: Rabbit

Clonality: Rabbit Polyclonal

Isotype: Immunogen-specific rabbit IgG

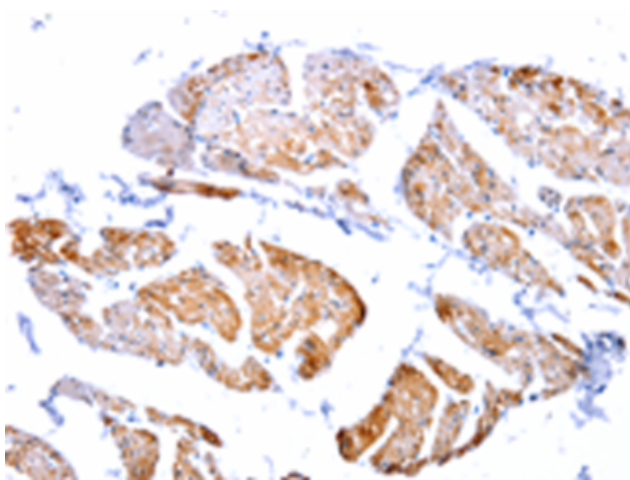
Purification: Antigen affinity purification

Species Reactivity: Human, Mouse, Rat

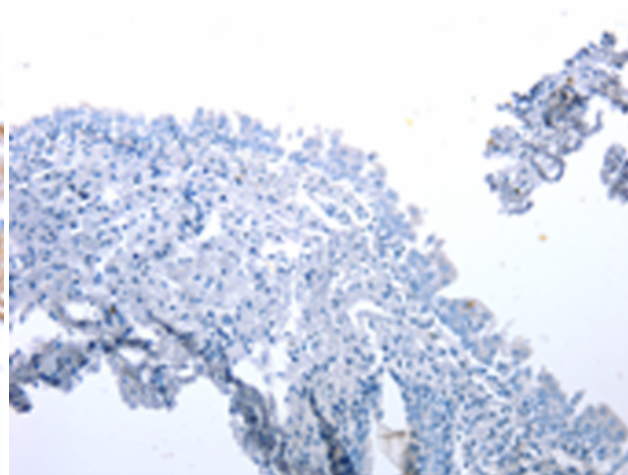
Constituents: PBS (without Mg²⁺ and Ca²⁺), pH 7.4, 150 mM NaCl, 0.05% Sodium Azide and 40% glycerol

Research Areas: Cancer, Cell Biology

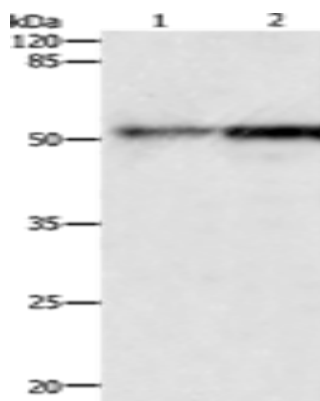
Storage & Shipping: Store at -20°C. Avoid repeated freezing and thawing



Immunohistochemistry analysis of paraffin embedded Human urinary bladder tissue using 216254(CASP2 Antibody) at a dilution of 1/100(Cytoplasm).



In comparison with the IHC on the left, the same paraffin-embedded Human urinary bladder tissue is first treated with the fusion protein and then with 216254(Anti-CASP2 Antibody) at dilution 1/100.



Gel: 10%SDS-PAGE, Lysate: 30 μ g;
Lane 1-2: Human fetal kidney tissue, Human lung tissue;
Primary antibody: 216254(CASP2 Antibody) at dilution 1/950;
Secondary antibody: Goat anti rabbit IgG at 1/8000 dilution;
Exposure time: 2 minutes