

## CASP8AP2 RABBIT PAB

**Cat.#:** S220552

**Product Name:** Anti-CASP8AP2 Rabbit Polyclonal Antibody

**Synonyms:** CED-4; FLASH; RIP25

**UNIPROT ID:** Q9UKL3 (Gene Accession - NP\_036247 )

**Background:** This protein is highly similar to FLASH, a mouse apoptotic protein identified by its interaction with the death-effector domain (DED) of caspase 8. Studies of FLASH protein suggested that this protein may be a component of the death-inducing signaling complex that includes Fas receptor, Fas-binding adapter FADD, and caspase 8, and plays a regulatory role in Fas-mediated apoptosis. Alternative splicing results in multiple transcript variants encoding the same protein.

**Immunogen:** Synthetic peptide of human CASP8AP2

**Applications:** ELISA, IHC

**Recommended Dilutions:** IHC: 25-100; ELISA: 1000-2000

**Host Species:** Rabbit

**Clonality:** Rabbit Polyclonal

**Isotype:** Immunogen-specific rabbit IgG

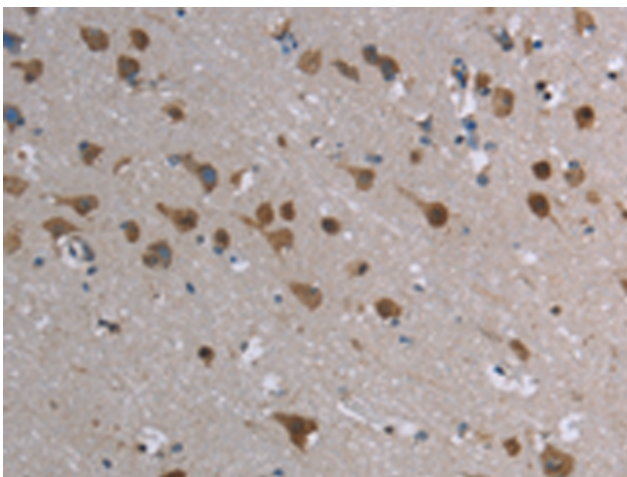
**Purification:** Antigen affinity purification

**Species Reactivity:** Human, Mouse

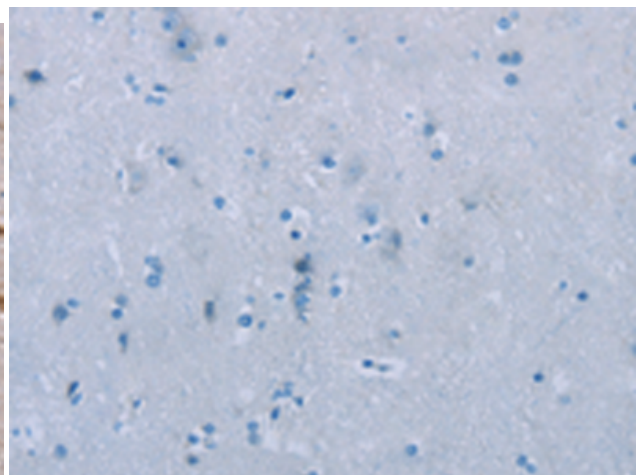
**Constituents:** PBS (without Mg<sup>2+</sup> and Ca<sup>2+</sup>), pH 7.4, 150 mM NaCl, 0.05% Sodium Azide and 40% glycerol

**Research Areas:** Cancer

**Storage & Shipping:** Store at -20°C. Avoid repeated freezing and thawing



Immunohistochemistry analysis of paraffin embedded Human brain tissue using 220552 (CASP8AP2 Antibody) at a dilution of 1/20 (Cytoplasm and Nucleus).



In comparison with the IHC on the left, the same paraffin-embedded Human brain tissue is first treated with the synthetic peptide and then with 220552 (Anti-CASP8AP2 Antibody) at dilution 1/20.