

CASP9 RABBIT PAB

Cat.#: S210055

Product Name: Anti-CASP9 Rabbit Polyclonal Antibody

Synonyms: MCH6, APAF3, APAF-3, PPP1R56, ICE-LAP6

UNIPROT ID: P55211 (Gene Accession - BC002452)

Background: This gene encodes a member of the cysteine-aspartic acid protease (caspase) family. Sequential activation of caspases plays a central role in the execution-phase of cell apoptosis. Caspases exist as inactive proenzymes which undergo proteolytic processing at conserved aspartic residues to produce two subunits, large and small, that dimerize to form the active enzyme. This protein is processed by caspase APAF1; this step is thought to be one of the earliest in the caspase activation cascade. Alternative splicing results in two transcript variants which encode different isoforms.

Immunogen: Fusion protein of human CASP9

Applications: ELISA, IHC

Recommended Dilutions: IHC: 50-200; ELISA: 500-5000

Host Species: Rabbit

Clonality: Rabbit Polyclonal

Isotype: Immunogen-specific rabbit IgG

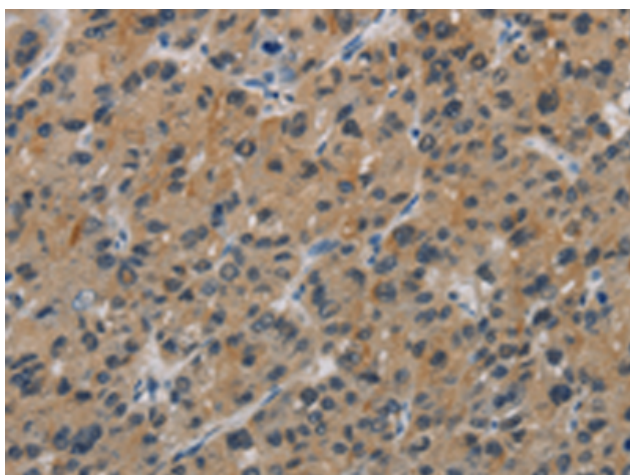
Purification: Antigen affinity purification

Species Reactivity: Human

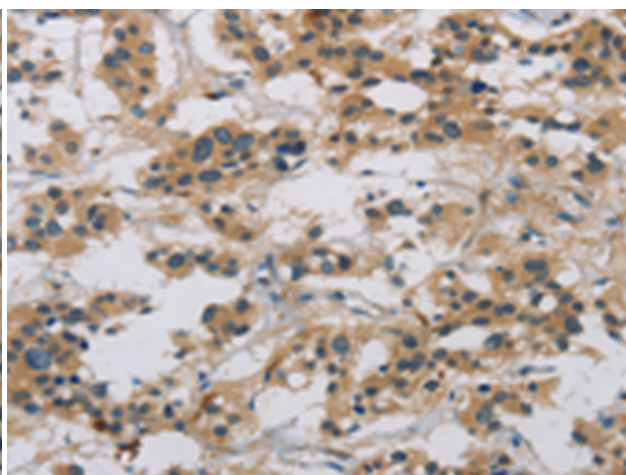
Constituents: PBS (without Mg²⁺ and Ca²⁺), pH 7.4, 150 mM NaCl, 0.05% Sodium Azide and 40% glycerol

Research Areas: Cancer

Storage & Shipping: Store at -20°C. Avoid repeated freezing and thawing



Immunohistochemistry analysis of paraffin-embedded Human liver cancer tissue using 210055(CASP9 Antibody) at a dilution of 1/60(Cytoplasm).



Immunohistochemistry analysis of paraffin-embedded Human thyroid cancer tissue using 210055(Anti-CASP9 Antibody) at a dilution of 1/60.