

CASPASE 3 RABBIT MAB

Cat.#: N261749

Product Name: Anti-Caspase 3 Rabbit Monoclonal Antibody

Synonyms: CASP3; CPP32; Caspase-3; CASP-3; Apopain; Cysteine protease CPP32; CPP-32; Protein Yama; SREBP cleavage activity 1; SCA-1

UNIPROT ID: P42574

Background: Sequential activation of caspases plays a central role in the execution-phase of cell apoptosis. Caspases exist as inactive proenzymes which undergo proteolytic processing at conserved aspartic residues to produce 2 subunits, large and small, that dimerize to form the active enzyme.

Immunogen: Recombinant protein of human Caspase-3

Applications: WB,IHC-P,IP

Recommended Dilutions: WB: 1/500-1/1000 IHC: 1/50-1/100 IP: 1/20

Host Species: Rabbit

Clonality: Rabbit Monoclonal

Clone ID: R08-6F2

MW: Calculated MW: 32 kDa; Observed MW: 32 kDa

Isotype: IgG

Purification: Affinity Purified

Species Reactivity: Human,Mouse,Rat

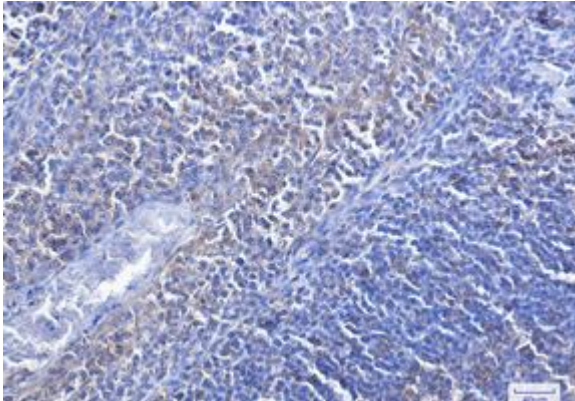
Conjugation: Unconjugated

Modification: Unmodified

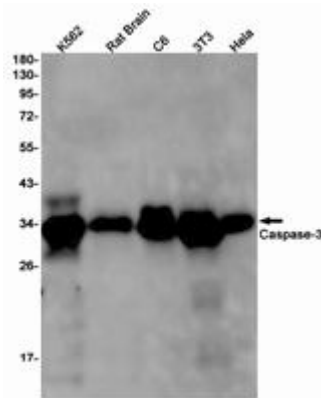
Constituents: PBS (without Mg²⁺ and Ca²⁺), pH 7.3 containing 50% glycerol, 0.5% BSA and 0.02% sodium azide

Research Areas: apoptosis - Caspase family

Storage & Shipping: Store at -20°C. Avoid repeated freezing and thawing



Immunohistochemistry analysis of paraffin-embedded Human tonsil using Caspase3 antibody. High-pressure and temperature Sodium Citrate pH 6.0 was used for antigen retrieval.



Western blot analysis of Caspase3 in K562, rat Brain, C6, 3T3, Hela lysates using Caspase 3 antibody.