

## CASPASE 7 RABBIT MAB

**Cat.#:** N263252

**Product Name:** Anti-Caspase 7 Rabbit Monoclonal Antibody

**Synonyms:** MCH3; CMH-1; LICE2; CASP-7; ICE-LAP3

**UNIPROT ID:** P55210

**Background:** Belongs to the peptidase C14A family. Involved in the activation cascade of caspases responsible for apoptosis execution. Cleaves and activates sterol regulatory element binding proteins (SREBPs). Proteolytically cleaves poly(ADP-ribose) polymerase (PARP) at a '216-Asp--Gly-217' bond. Overexpression promotes programmed cell death.

**Immunogen:** Recombinant protein of human Caspase-7

**Applications:** WB,IHC-P

**Recommended Dilutions:** WB: 1/500-1/1000 IHC: 1/50-1/100

**Host Species:** Rabbit

**Clonality:** Rabbit Monoclonal

**Clone ID:** R06-0F6

**MW:** Calculated MW: 34 kDa; Observed MW: 34 kDa

**Isotype:** IgG

**Purification:** Affinity Purified

**Species Reactivity:** Human,Mouse,Rat

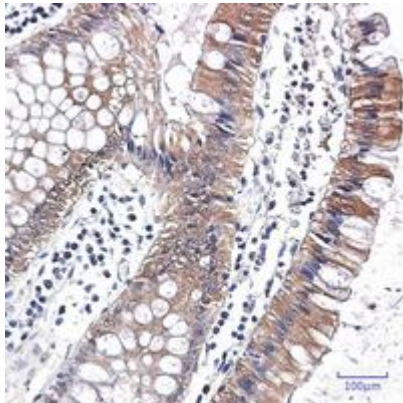
**Conjugation:** Unconjugated

**Modification:** Unmodified

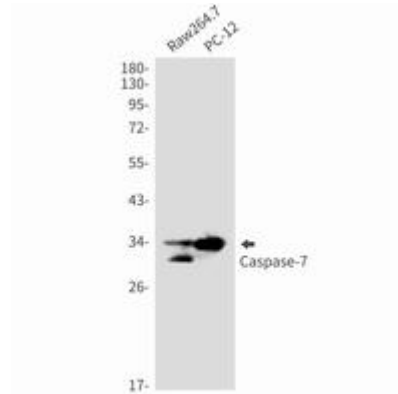
**Constituents:** PBS (without Mg<sup>2+</sup> and Ca<sup>2+</sup>), pH 7.3 containing 50% glycerol, 0.5% BSA and 0.02% sodium azide

**Research Areas:** apoptosis - Caspase family

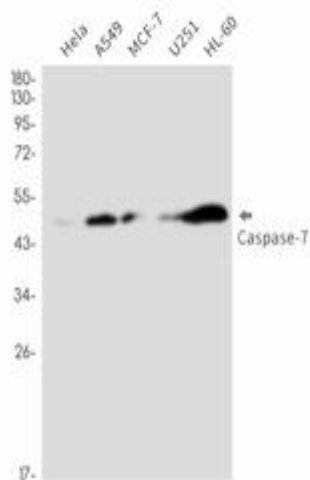
**Storage & Shipping:** Store at -20°C. Avoid repeated freezing and thawing



Immunohistochemistry analysis of paraffin-embedded Human colon cancer using Caspase7 antibody. High-pressure and temperature Sodium Citrate pH 6.0 was used for antigen retrieval.



Western blot analysis of Caspase7 in Raw264.7, PC-12 lysates using Caspase 7 antibody.



Western blot analysis of Caspase7 in HeLa, A549, MCF-7, U251, HL-60 lysates using Caspase7 antibody.