

CASPASE 9 RABBIT MAB

Cat.#: N261685

Product Name: Anti-Caspase 9 Rabbit Monoclonal Antibody

Synonyms: CASP9; MCH6; Caspase-9; CASP-9; Apoptotic protease Mch-6; Apoptotic protease-activating factor 3; APAF-3; ICE-like apoptotic protease 6; ICE-LAP6

UNIPROT ID: P55211

Background: Caspase-9 (ICE-LAP6, Mch6) is an important member of the cysteine aspartic acid protease (caspase) family. Upon apoptotic stimulation, cytochrome c released from mitochondria associates with the 47 kDa procaspase-9/Apaf 1. Apaf-1 mediated activation of caspase-9 involves intrinsic proteolytic processing resulting in cleavage at Asp315 and producing a p35 subunit.

Immunogen: Recombinant protein of human Caspase-9

Applications: WB,IP

Recommended Dilutions: WB: 1/500-1/1000 IP: 1/20

Host Species: Rabbit

Clonality: Rabbit Monoclonal

Clone ID: R09-4C4

MW: Calculated MW: 46 kDa; Observed MW: 46 kDa

Isotype: IgG

Purification: Affinity Purified

Species Reactivity: Human,Mouse

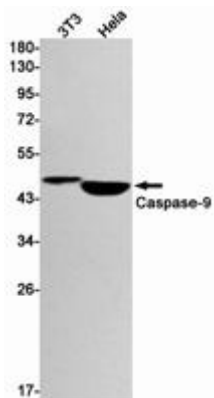
Conjugation: Unconjugated

Modification: Unmodified

Constituents: PBS (without Mg²⁺ and Ca²⁺), pH 7.3 containing 50% glycerol, 0.5% BSA and 0.02% sodium azide

Research Areas: apoptosis - Caspase family

Storage & Shipping: Store at -20°C. Avoid repeated freezing and thawing



Western blot analysis of Caspase9 in 3T3, HeLa lysates using Caspase 9 antibody.