

## CAST RABBIT PAB

**Cat.#:** S217230

**Product Name:** Anti-CAST Rabbit Polyclonal Antibody

**Synonyms:** BS-17

**UNIPROT ID:** P20810 (Gene Accession - BC013579 )

**Background:** The protein encoded by this gene is an endogenous calpain (calcium-dependent cysteine protease) inhibitor. It consists of an N-terminal domain L and four repetitive calpain-inhibition domains (domains 1-4), and it is involved in the proteolysis of amyloid precursor protein. The calpain/calpastatin system is involved in numerous membrane fusion events, such as neural vesicle exocytosis and platelet and red-cell aggregation. The encoded protein is also thought to affect the expression levels of genes encoding structural or regulatory proteins. Alternatively spliced transcript variants encoding different isoforms have been described.

**Immunogen:** Fusion protein of human CAST

**Applications:** ELISA, WB, IHC

**Recommended Dilutions:** IHC: 50-200;WB: 500-2000;ELISA: 2000-5000

**Host Species:** Rabbit

**Clonality:** Rabbit Polyclonal

**Isotype:** Immunogen-specific rabbit IgG

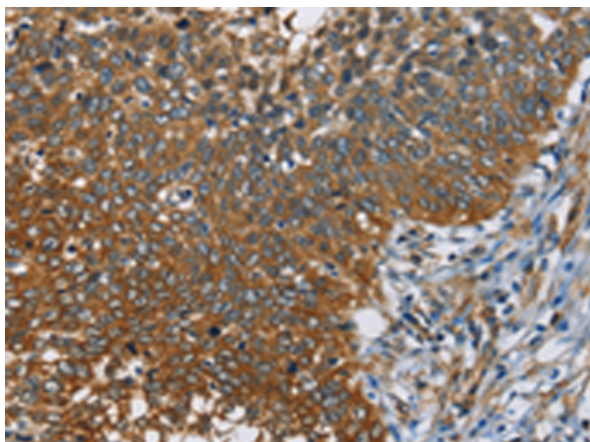
**Purification:** Antigen affinity purification

**Species Reactivity:** Human

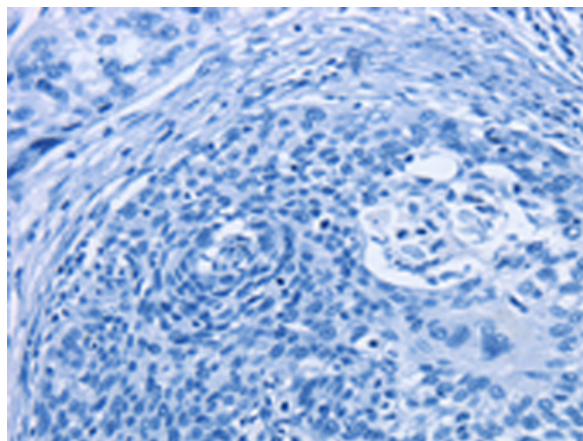
**Constituents:** PBS (without Mg<sup>2+</sup> and Ca<sup>2+</sup>), pH 7.4, 150 mM NaCl, 0.05% Sodium Azide and 40% glycerol

**Research Areas:** Cell Biology, Neuroscience

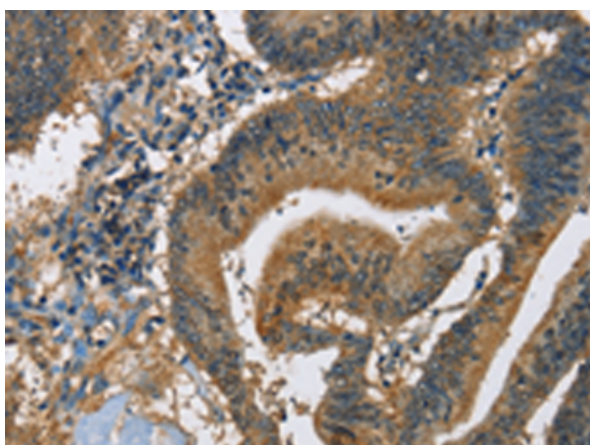
**Storage & Shipping:** Store at -20°C. Avoid repeated freezing and thawing



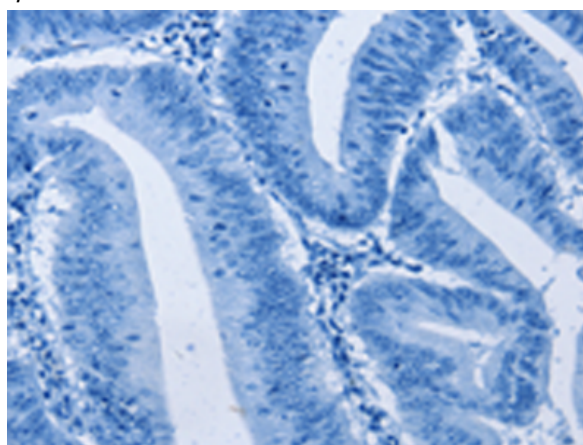
Immunohistochemistry analysis of paraffin embedded Human cervical cancer tissue using 217230(CAST Antibody) at a dilution of 1/60(Cytoplasm).



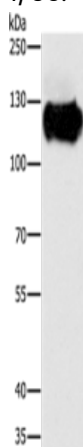
In comparison with the IHC on the left, the same paraffin-embedded Human cervical cancer tissue is first treated with the fusion protein and then with 217230(Anti-CAST Antibody) at dilution 1/60.



The image on the left is immunohistochemistry of paraffin-embedded Human colon cancer tissue using 217230(Anti-CAST Antibody) at a dilution of 1/60.



In comparison with the IHC on the left, the same paraffin-embedded Human colon cancer tissue is first treated with fusion protein and then with D222017(Anti-CAST Antibody) at dilution 1/60.



Gel: 8%SDS-PAGE, Lysate: 40 µg;  
Lane: Lovo cells;  
Primary antibody: 217230(CAST Antibody) at dilution 1/600;  
Secondary antibody: Goat anti rabbit IgG at 1/8000 dilution;  
Exposure time: 7 seconds



# Product Description

Pioneering GTPase and Oncogene Product Development since 2010

---