

CAT RABBIT PAB

Cat.#: S211002

Product Name: Anti-CAT Rabbit Polyclonal Antibody

Synonyms:

UNIPROT ID: P04040 (Gene Accession - BC110398)

Background: This gene encodes catalase, a key antioxidant enzyme in the bodies defense against oxidative stress. Catalase is a heme enzyme that is present in the peroxisome of nearly all aerobic cells. Catalase converts the reactive oxygen species hydrogen peroxide to water and oxygen and thereby mitigates the toxic effects of hydrogen peroxide. Oxidative stress is hypothesized to play a role in the development of many chronic or late-onset diseases such as diabetes, asthma, Alzheimer's disease, systemic lupus erythematosus, rheumatoid arthritis, and cancers. Polymorphisms in this gene have been associated with decreases in catalase activity but, to date, acatalasemia is the only disease known to be caused by this gene.

Immunogen: Fusion protein of human CAT

Applications: ELISA, WB, IHC

Recommended Dilutions: IHC: 50-200;WB: 500-2000;ELISA: 2000-5000

Host Species: Rabbit

Clonality: Rabbit Polyclonal

Isotype: Immunogen-specific rabbit IgG

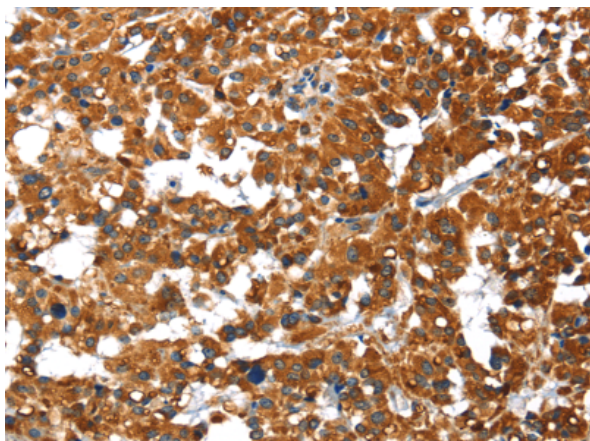
Purification: Antigen affinity purification

Species Reactivity: Human, Mouse, Rat

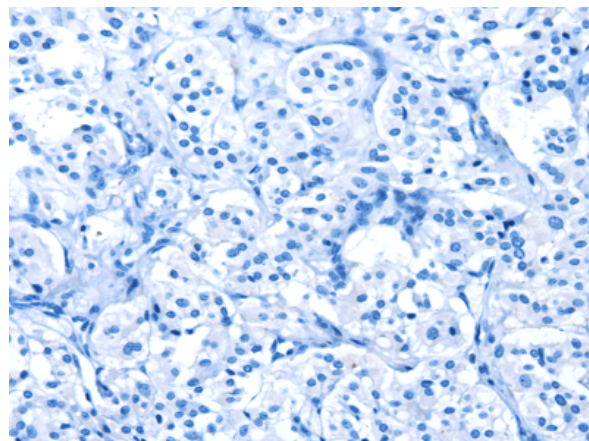
Constituents: PBS (without Mg²⁺ and Ca²⁺), pH 7.4, 150 mM NaCl, 0.05% Sodium Azide and 40% glycerol

Research Areas: Signal Transduction, Cancer, Metabolism, Cardiovascular

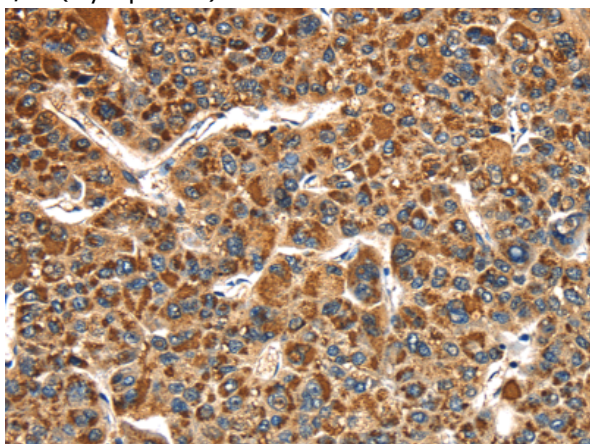
Storage & Shipping: Store at -20°C. Avoid repeated freezing and thawing



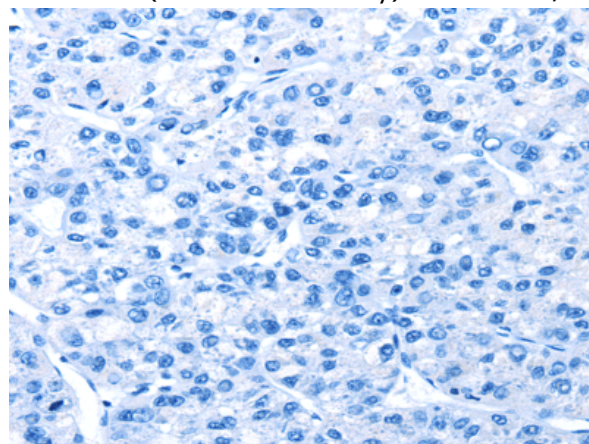
Immunohistochemistry analysis of paraffin embedded Human thyroid cancer tissue using 211002(CAT Antibody) at a dilution of 1/40(Cytoplasm).



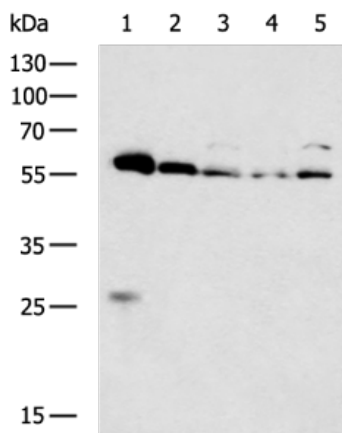
In comparison with the IHC on the left, the same paraffin-embedded Human thyroid cancer tissue is first treated with the fusion protein and then with 211002(Anti-CAT Antibody) at dilution 1/40.



The image on the left is immunohistochemistry of paraffin-embedded Human liver cancer tissue using 211002(Anti-CAT Antibody) at a dilution of 1/40.



In comparison with the IHC on the left, the same paraffin-embedded Human liver cancer tissue is first treated with fusion protein and then with D122036(Anti-CAT Antibody) at dilution 1/40.



Gel: 8%SDS-PAGE, Lysate: 40 µg;
 Lane 1-5: Mouse liver tissue, Raji, HeLa, HepG2, A549 cell lysates;
 Primary antibody: 211002(CAT Antibody) at dilution 1/500;
 Secondary antibody: HRP-conjugated Goat anti rabbit IgG at 1/5000 dilution;
 Exposure time: 20 seconds



Product Description

Pioneering GTPase and Oncogene Product Development since 2010
