

## CATALASE RABBIT MAB

**Cat.#:** N261969

**Product Name:** Anti-Catalase Rabbit Monoclonal Antibody

**Synonyms:** CasI; CAT; Catalase; Csl

**UNIPROT ID:** P04040

**Background:** Catalase catalyzes the conversion of hydrogen peroxide to water and oxygen. Research studies show that overexpression of this antioxidant enzyme increases the ability of pancreatic  $\beta$ -cells to scavenge reactive oxygen species (ROS), thereby protecting pancreatic  $\beta$ -cells from oxidative stress.

**Immunogen:** A synthetic peptide of human Catalase

**Applications:** WB,IHC-F,IHC-P,ICC/IF

**Recommended Dilutions:** WB: 1/500-1/1000 IHC: 1/50-1/100 IF: 1/50-1/200

**Host Species:** Rabbit

**Clonality:** Rabbit Monoclonal

**Clone ID:** R05-5D9

**MW:** Calculated MW: 60 kDa; Observed MW: 60 kDa

**Isotype:** IgG

**Purification:** Affinity Purified

**Species Reactivity:** Human

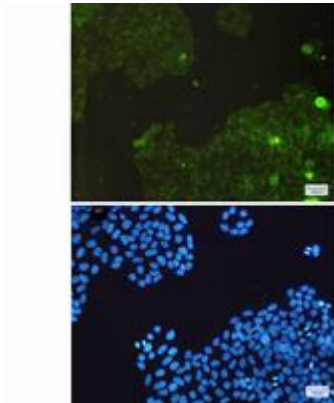
**Conjugation:** Unconjugated

**Modification:** Unmodified

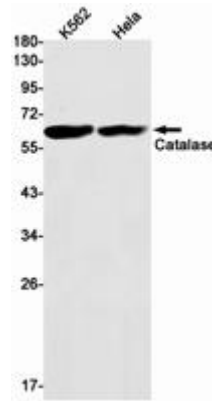
**Constituents:** PBS (without  $Mg^{2+}$  and  $Ca^{2+}$ ), pH 7.3 containing 50% glycerol, 0.5% BSA and 0.02% sodium azide

**Research Areas:** Tags & Cell Markers

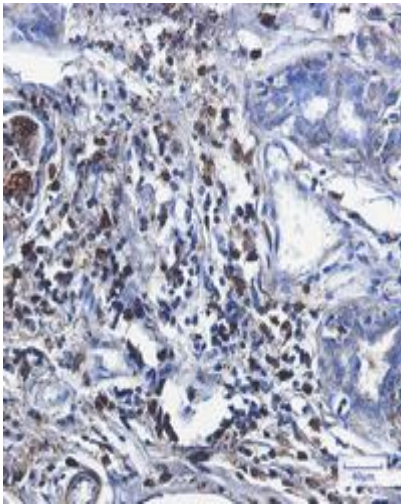
**Storage & Shipping:** Store at  $-20^{\circ}C$ . Avoid repeated freezing and thawing



Immunocytochemistry analysis of Catalase (green) in HeLa using Catalase antibody, and DAPI (blue)



Western blot analysis of Catalase in K562, HeLa lysates using Catalase antibody.



Immunohistochemistry analysis of paraffin-embedded Human breast cancer using Catalase antibody. High-pressure and temperature Sodium Citrate pH 6.0 was used for antigen retrieval.