

CATHELICIDIN RABBIT MAB

Cat.#: N261970

Product Name: Anti-Cathelicidin Rabbit Monoclonal Antibody

Synonyms: LL37; CAP18; CRAMP; HSD26; CAP-18; FALL39; FALL-39

UNIPROT ID: P49913

Background: Binds to bacterial lipopolysaccharides (LPS), has antibacterial activity.

Immunogen: A synthetic peptide of human Cathelicidin

Applications: WB,IHC-P,IP

Recommended Dilutions: WB: 1/500-1/1000 IHC: 1/50-1/100 IP: 1/20

Host Species: Rabbit

Clonality: Rabbit Monoclonal

Clone ID: R05-6J2

MW: Calculated MW: 19 kDa; Observed MW: 19 kDa

Isotype: IgG

Purification: Affinity Purified

Species Reactivity: Human

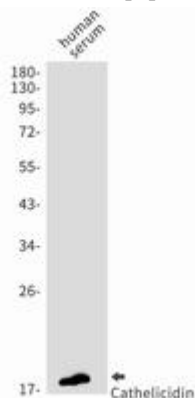
Conjugation: Unconjugated

Modification: Unmodified

Constituents: PBS (without Mg²⁺ and Ca²⁺), pH 7.3 containing 50% glycerol, 0.5% BSA and 0.02% sodium azide

Research Areas: Microbiology

Storage & Shipping: Store at -20°C. Avoid repeated freezing and thawing



Western blot analysis of Cathelicidin/CLP in Human serum lysates using Cathelicidin antibody.



Product Description

Pioneering GTPase and Oncogene Product Development since 2010
