

CATHEPSIN B RABBIT MAB

Cat.#: N261971

Product Name: Anti-Cathepsin B Rabbit Monoclonal Antibody

Synonyms: CB

UNIPROT ID: P10605

Background: Thiol protease which is believed to participate in intracellular degradation and turnover of proteins. Cleaves matrix extracellular phosphoglycoprotein MEPE. Has also been implicated in tumor invasion and metastasis.

Immunogen: Recombinant protein of mouse Cathepsin B

Applications: WB,ICC/IF

Recommended Dilutions: WB: 1/500-1/1000 IF: 1/50-1/200

Host Species: Rabbit

Clonality: Rabbit Monoclonal

Clone ID: R08-7H4

MW: Calculated MW: 37 kDa; Observed MW: 44,27,24 kDa

Isotype: IgG

Purification: Affinity Purified

Species Reactivity: Mouse,Rat

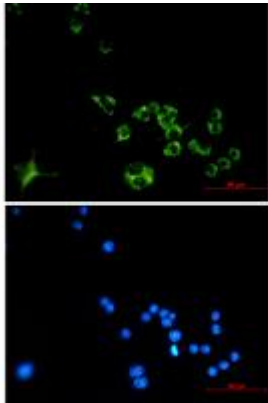
Conjugation: Unconjugated

Modification: Unmodified

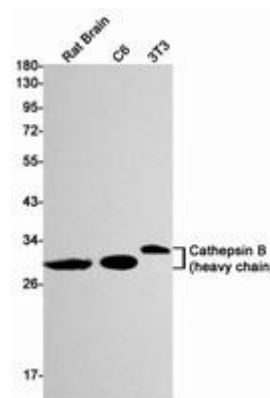
Constituents: PBS (without Mg²⁺ and Ca²⁺), pH 7.3 containing 50% glycerol, 0.5% BSA and 0.02% sodium azide

Research Areas: Neuroscience

Storage & Shipping: Store at -20°C. Avoid repeated freezing and thawing



Immunocytochemistry analysis of Cathepsin B (green) in Raw264.7 using Cathepsin B antibody, and DAPI (blue)



Western blot analysis of Cathepsin B in rat Brain, C6, 3T3 lysates using Cathepsin B antibody.