

CATHEPSIN Z RABBIT MAB

Cat.#: N261972

Product Name: Anti-Cathepsin Z Rabbit Monoclonal Antibody

Synonyms: CTSX

UNIPROT ID: Q9UBR2

Background: Exhibits carboxy-monopeptidase as well as carboxy-dipeptidase activity.

Immunogen: Recombinant protein of human Cathepsin Z

Applications: WB,IHC-P

Recommended Dilutions: WB: 1/500-1/1000 IHC: 1/50-1/100

Host Species: Rabbit

Clonality: Rabbit Monoclonal

Clone ID: R09-9J9

MW: Calculated MW: 34 kDa; Observed MW: 34 kDa

Isotype: IgG

Purification: Affinity Purified

Species Reactivity: Human

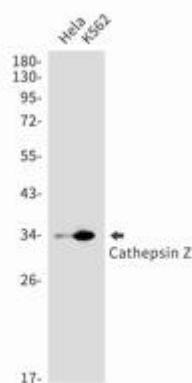
Conjugation: Unconjugated

Modification: Unmodified

Constituents: PBS (without Mg²⁺ and Ca²⁺), pH 7.3 containing 50% glycerol, 0.5% BSA and 0.02% sodium azide

Research Areas: Tags & Cell Markers

Storage & Shipping: Store at -20°C. Avoid repeated freezing and thawing



Western blot analysis of Cathepsin Z in HeLa, K562 lysates using Cathepsin Z antibody.



Product Description

Pioneering GTPase and Oncogene Product Development since 2010
