

## CBLN3 RABBIT PAB

**Cat.#:** S221684

**Product Name:** Anti-CBLN3 Rabbit Polyclonal Antibody

**Synonyms:** PRO1486

**UNIPROT ID:** Q6UW01 (Gene Accession - NP\_001034860 )

**Background:** Members of the precerebellin family, such as CBLN3, contain a cerebellin motif (see CBLN1; MIM 600432) and a C-terminal C1q signature domain (see MIM 120550) that mediates trimeric assembly of atypical collagen complexes. However, precerebellins do not contain a collagen motif, suggesting that they are not conventional components of the extracellular matrix (Pang et al., 2000 [PubMed 10964938]).

**Immunogen:** Synthetic peptide of human CBLN3

**Applications:** ELISA, IHC

**Recommended Dilutions:** IHC: 30-150; ELISA: 5000-10000

**Host Species:** Rabbit

**Clonality:** Rabbit Polyclonal

**Isotype:** Immunogen-specific rabbit IgG

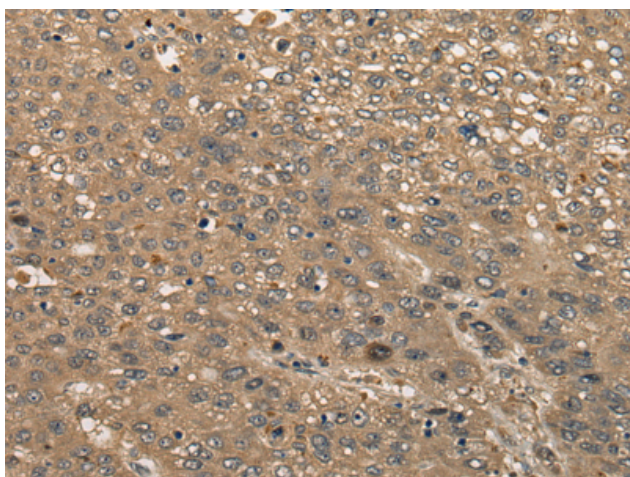
**Purification:** Antigen affinity purification

**Species Reactivity:** Human, Mouse

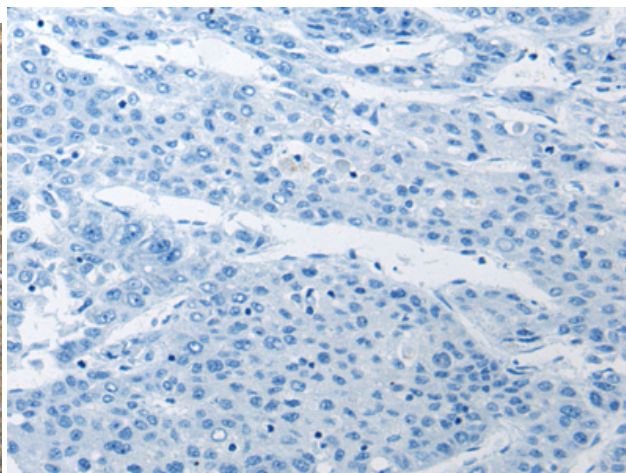
**Constituents:** PBS (without Mg<sup>2+</sup> and Ca<sup>2+</sup>), pH 7.4, 150 mM NaCl, 0.05% Sodium Azide and 40% glycerol

**Research Areas:** Neuroscience

**Storage & Shipping:** Store at -20°C. Avoid repeated freezing and thawing



Immunohistochemistry analysis of paraffin embedded Human liver cancer tissue using 221684(CBLN3 Antibody) at a dilution of 1/30(Secreted).



In comparison with the IHC on the left, the same paraffin-embedded Human liver cancer tissue is first treated with the synthetic peptide and then with 221684(Anti-CBLN3 Antibody) at dilution 1/30.