

CBR1 MOUSE MAB

Cat.#: N261532

Product Name: Anti-CBR1 Mouse Monoclonal Antibody

Synonyms: 15 hydroxyprostaglandin dehydrogenase [NADP⁻]; 15-hydroxyprostaglandin dehydrogenase [NADP⁻]; Carbonyl reductase [NADPH]⁺ 1; CBR 1; CBR1; CBR1_HUMAN; CRN; NADPH dependent carbonyl reductase 1; NADPH-dependent carbonyl reductase 1; Prostaglandin 9 ketoreductase; Prostaglandin 9-ketoreductase; Prostaglandin E(2) 9 reductase; Prostaglandin-E(2) 9-reductase; SDR21C1.

UNIPROT ID: P16152

Background: NADPH-dependent reductase with broad substrate specificity. Catalyzes the reduction of a wide variety of carbonyl compounds including quinones, prostaglandins, menadione, plus various xenobiotics.

Immunogen: Purified recombinant human CBR1 protein fragments expressed in E.coli

Applications: WB, ICC/IF

Recommended Dilutions: WB: 1/500-1/1000 IF: 1/50-1/200

Host Species: Mouse

Clonality: Mouse Monoclonal

Clone ID: 2C9-B12-C4

MW: Calculated MW: 30 kDa; Observed MW: 30 kDa

Isotype: IgG1

Purification: Affinity Purified

Species Reactivity: Human, Mouse, Rat

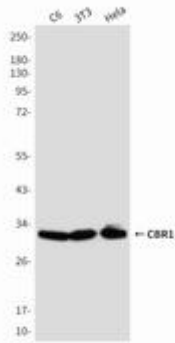
Conjugation: Unconjugated

Modification: Unmodified

Constituents: PBS (without Mg²⁺ and Ca²⁺), pH 7.3 containing 50% glycerol, 0.5% BSA and 0.02% sodium azide

Research Areas: Signal Transduction

Storage & Shipping: Store at -20°C. Avoid repeated freezing and thawing



Western blot analysis of CBR1 in C6, 3T3 and Hela lysates using CBR1 antibody.