

## CBWD1 RABBIT PAB

**Cat.#:** S211838

**Product Name:** Anti-CBWD1 Rabbit Polyclonal Antibody

**Synonyms:** COBP

**UNIPROT ID:** Q9BRT8 (Gene Accession - BC132759 )

**Background:** The function of this protein remains unknown.

**Immunogen:** Fusion protein of human CBWD1

**Applications:** ELISA, IHC

**Recommended Dilutions:** IHC: 25-100; ELISA: 5000-10000

**Host Species:** Rabbit

**Clonality:** Rabbit Polyclonal

**Isotype:** Immunogen-specific rabbit IgG

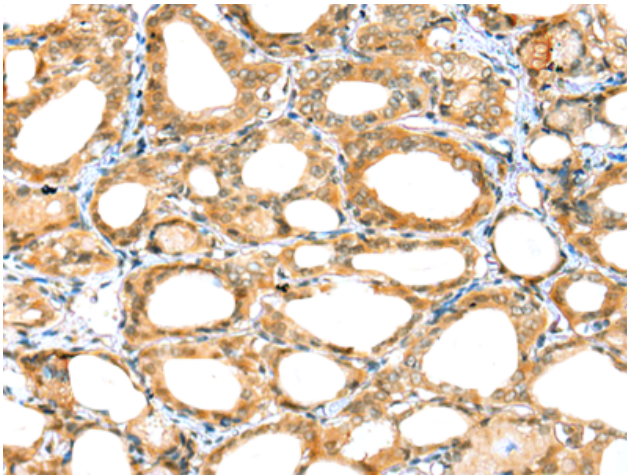
**Purification:** Antigen affinity purification

**Species Reactivity:** Human

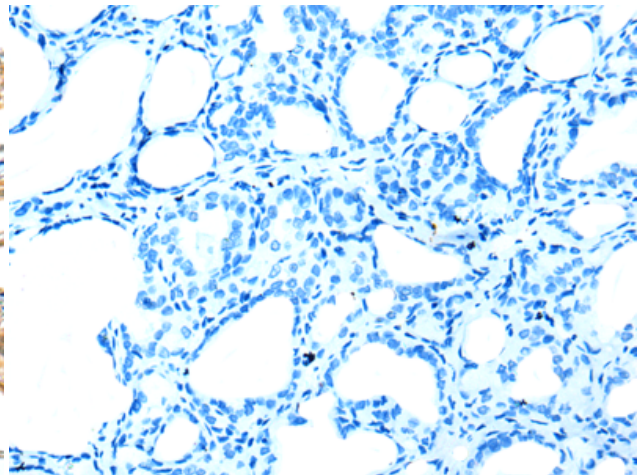
**Constituents:** PBS (without Mg<sup>2+</sup> and Ca<sup>2+</sup>), pH 7.4, 150 mM NaCl, 0.05% Sodium Azide and 40% glycerol

**Research Areas:** Cell Biology, Neuroscience

**Storage & Shipping:** Store at -20°C. Avoid repeated freezing and thawing



Immunohistochemistry analysis of paraffin embedded Human thyroid cancer tissue using 211838 (CBWD1 Antibody) at a dilution of 1/20 (Cytoplasm).



In comparison with the IHC on the left, the same paraffin-embedded Human thyroid cancer tissue is first treated with the fusion protein and then with 211838 (Anti-CBWD1 Antibody) at dilution 1/20.