

## CBX4 RABBIT MAB

**Cat.#:** N263254

**Product Name:** Anti-CBX4 Rabbit Monoclonal Antibody

**Synonyms:** CBX4; hPc2; NBP16; PC2

**UNIPROT ID:** O00257

**Background:** E3 SUMO-protein ligase which facilitates SUMO1 conjugation by UBE2I. Component of the Polycomb group (PcG) multiprotein PRC1 complex, a complex required to maintain the transcriptionally repressive state of many genes, including Hox genes, throughout development.

**Immunogen:** A synthetic peptide of human CBX4

**Applications:** WB,IP

**Recommended Dilutions:** WB: 1/500-1/1000 IP: 1/20

**Host Species:** Rabbit

**Clonality:** Rabbit Monoclonal

**Clone ID:** R08-413

**MW:** Calculated MW: 61 kDa; Observed MW: 61 kDa

**Isotype:** IgG

**Purification:** Affinity Purified

**Species Reactivity:** Human,Mouse,Rat

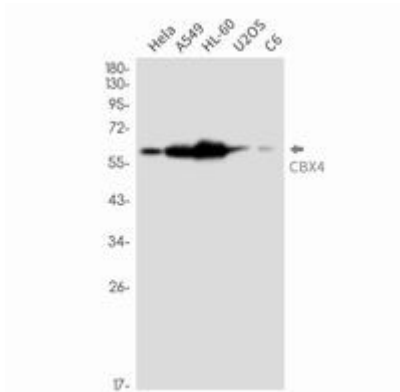
**Conjugation:** Unconjugated

**Modification:** Unmodified

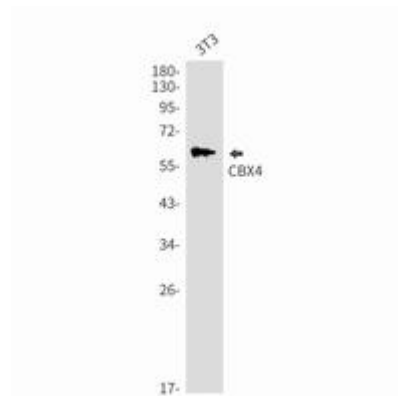
**Constituents:** PBS (without Mg<sup>2+</sup> and Ca<sup>2+</sup>), pH 7.3 containing 50% glycerol, 0.5% BSA and 0.02% sodium azide

**Research Areas:** Epigenetics and Nuclear Signaling

**Storage & Shipping:** Store at -20°C. Avoid repeated freezing and thawing



Western blot analysis of CBX4 in HeLa, A549, HL-60, U2OS, C6 lysates using CBX4 antibody.



Western blot analysis of CBX4 in 3T3 lysates using CBX4 antibody.