

## CBX7 RABBIT PAB

**Cat.#:** S221185

**Product Name:** Anti-CBX7 Rabbit Polyclonal Antibody

**Synonyms:**

**UNIPROT ID:** O95931 (Gene Accession - NP\_783640 )

**Background:** This gene encodes a protein that contains the CHROMO (CHROMatin Organization MODifier) domain. The encoded protein is a component of the Polycomb repressive complex 1 (PRC1), and is thought to control the lifespan of several normal human cells.

**Immunogen:** Synthetic peptide of human CBX7

**Applications:** ELISA, WB, IHC

**Recommended Dilutions:** IHC: 25-50;WB: 500-2000;ELISA: 5000-10000

**Host Species:** Rabbit

**Clonality:** Rabbit Polyclonal

**Isotype:** Immunogen-specific rabbit IgG

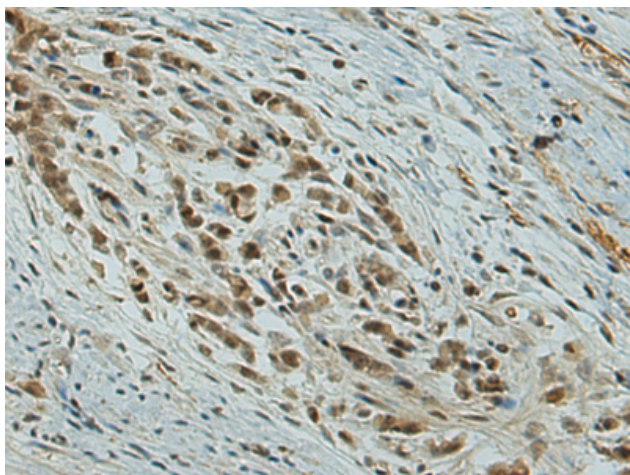
**Purification:** Antigen affinity purification

**Species Reactivity:** Human, Mouse, Rat

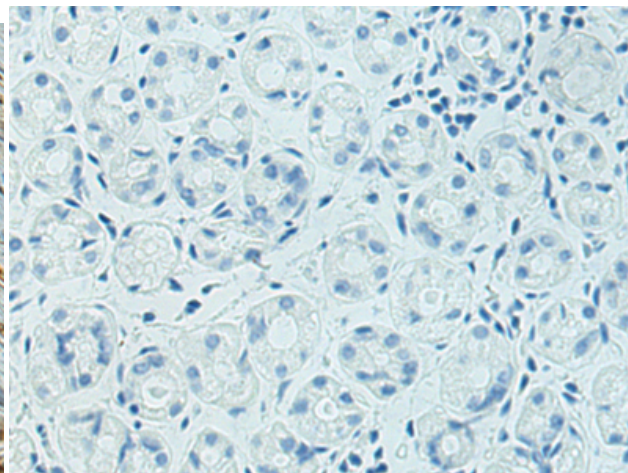
**Constituents:** PBS (without Mg<sup>2+</sup> and Ca<sup>2+</sup>), pH 7.4, 150 mM NaCl, 0.05% Sodium Azide and 40% glycerol

**Research Areas:** Epigenetics and Nuclear Signaling

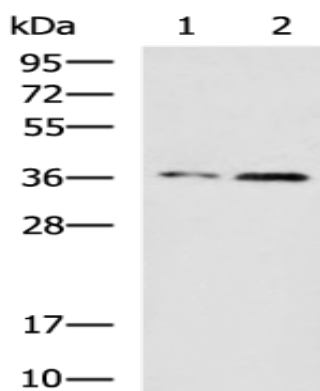
**Storage & Shipping:** Store at -20°C. Avoid repeated freezing and thawing



Immunohistochemistry analysis of paraffin embedded Human gastric cancer tissue using 221185(CBX7 Antibody) at a dilution of 1/25(Nucleus).



In comparison with the IHC on the left, the same paraffin-embedded Human gastric cancer tissue is first treated with the synthetic peptide and then with 221185(Anti-CBX7 Antibody) at dilution 1/25.



Gel: 12%SDS-PAGE, Lysate: 40 µg;  
Lane 1-2: K562 and TM4 cell lysates;  
Primary antibody: 221185(CBX7 Antibody) at dilution 1/650;  
Secondary antibody: HRP-conjugated Goat anti rabbit IgG at 1/5000 dilution;  
Exposure time: 3 minutes