

CCAR1 RABBIT PAB

Cat.#: S217363

Product Name: Anti-CCAR1 Rabbit Polyclonal Antibody

Synonyms:

UNIPROT ID: Q8IX12 (Gene Accession - BC130626)

Background: Enables RNA polymerase II cis-regulatory region sequence-specific DNA binding activity; nuclear receptor coactivator activity; and transcription corepressor activity. Involved in positive regulation of cell migration and positive regulation of cell population proliferation. Acts upstream of or within positive regulation of apoptotic process. Located in nuclear envelope lumen.

Immunogen: Fusion protein of human CCAR1

Applications: ELISA, IHC

Recommended Dilutions: IHC: 50-200; ELISA: 5000-10000

Host Species: Rabbit

Clonality: Rabbit Polyclonal

Isotype: Immunogen-specific rabbit IgG

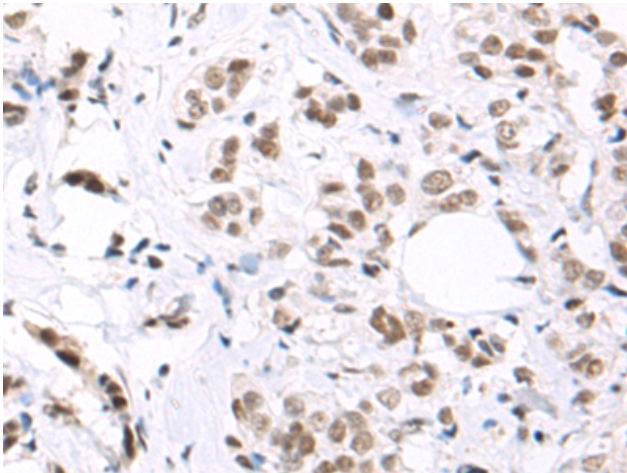
Purification: Antigen affinity purification

Species Reactivity: Human, Mouse

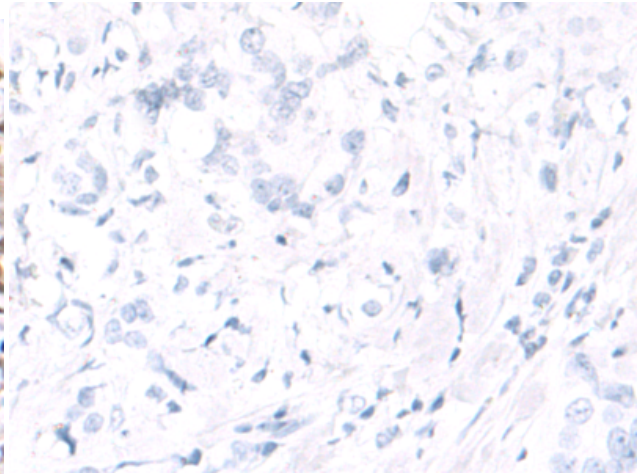
Constituents: PBS (without Mg²⁺ and Ca²⁺), pH 7.4, 150 mM NaCl, 0.05% Sodium Azide and 40% glycerol

Research Areas: Epigenetics and Nuclear Signaling, Cancer

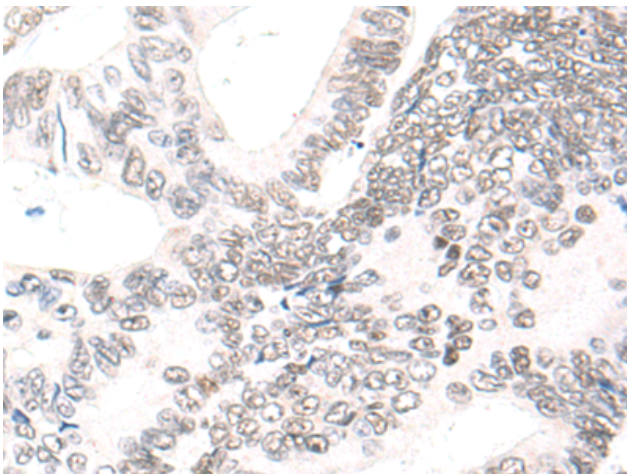
Storage & Shipping: Store at -20°C. Avoid repeated freezing and thawing



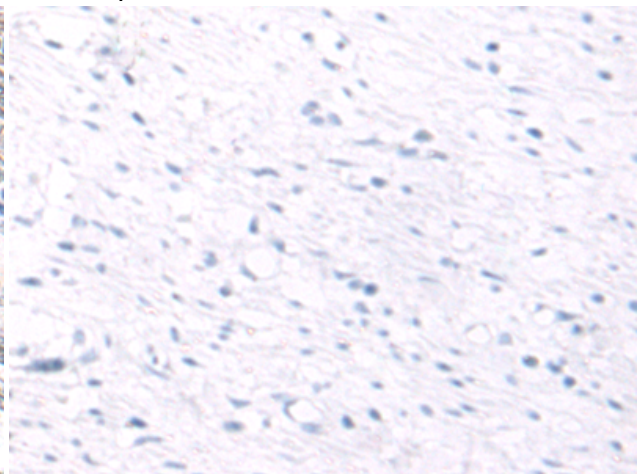
Immunohistochemistry analysis of paraffin-embedded Human breast cancer tissue using 217363 (CCAR1 Antibody) at a dilution of 1/80 (Nucleus).



In comparison with the IHC on the left, the same paraffin-embedded Human breast cancer tissue is first treated with the fusion protein and then with 217363 (Anti-CCAR1 Antibody) at dilution 1/80.



The image on the left is immunohistochemistry of paraffin-embedded Human colorectal cancer tissue using 217363 (Anti-CCAR1 Antibody) at a dilution of 1/80.



In comparison with the IHC on the left, the same paraffin-embedded Human colorectal cancer tissue is first treated with fusion protein and then with D222236 (Anti-CCAR1 Antibody) at dilution 1/80.