

CCDC102A RABBIT PAB

Cat.#: S221687

Product Name: Anti-CCDC102A Rabbit Polyclonal Antibody

Synonyms:

UNIPROT ID: Q96A19 (Gene Accession - NP_149989)

Background: The function of this protein remains unknown.

Immunogen: Synthetic peptide of human CCDC102A

Applications: ELISA, IHC

Recommended Dilutions: IHC: 30-150; ELISA: 5000-10000

Host Species: Rabbit

Clonality: Rabbit Polyclonal

Isotype: Immunogen-specific rabbit IgG

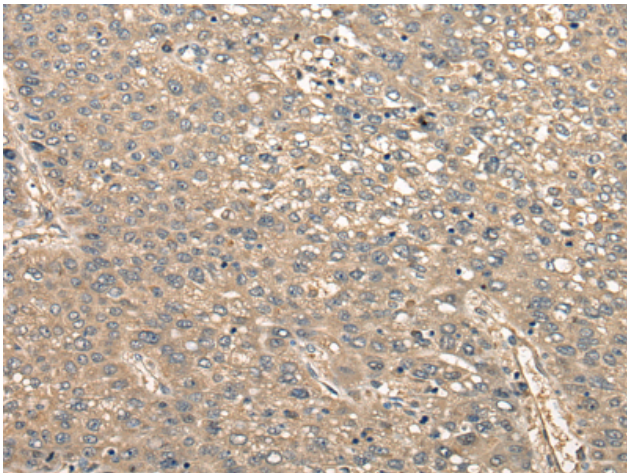
Purification: Antigen affinity purification

Species Reactivity: Human, Mouse

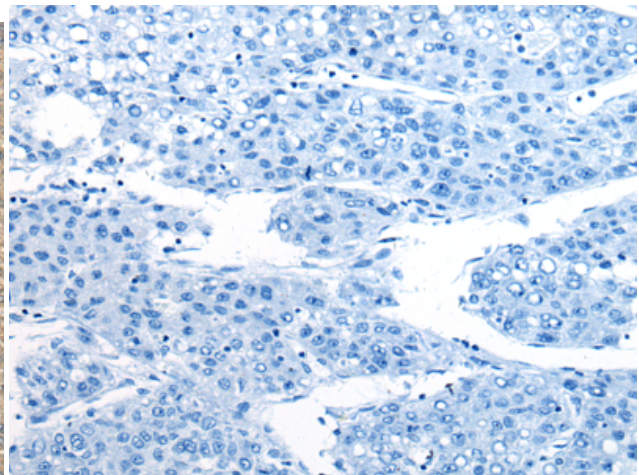
Constituents: PBS (without Mg²⁺ and Ca²⁺), pH 7.4, 150 mM NaCl, 0.05% Sodium Azide and 40% glycerol

Research Areas: Signal Transduction

Storage & Shipping: Store at -20°C. Avoid repeated freezing and thawing



Immunohistochemistry analysis of paraffin embedded Human liver cancer tissue using 221687(CCDC102A Antibody) at a dilution of 1/30(Cytoplasm).



In comparison with the IHC on the left, the same paraffin-embedded Human liver cancer tissue is first treated with the synthetic peptide and then with 221687(Anti-CCDC102A Antibody) at dilution 1/30.