

## CCDC120 RABBIT PAB

**Cat.#:** S218440

**Product Name:** Anti-CCDC120 Rabbit Polyclonal Antibody

**Synonyms:** JM11

**UNIPROT ID:** Q96HB5 (Gene Accession - BC008769 )

**Background:** This gene encodes a protein that contains a coiled-coil domain. Several alternatively spliced transcript variants encoding multiple isoforms have been found for this gene.

**Immunogen:** Fusion protein of human CCDC120

**Applications:** ELISA, IHC

**Recommended Dilutions:** IHC: 50-200; ELISA: 5000-10000

**Host Species:** Rabbit

**Clonality:** Rabbit Polyclonal

**Isotype:** Immunogen-specific rabbit IgG

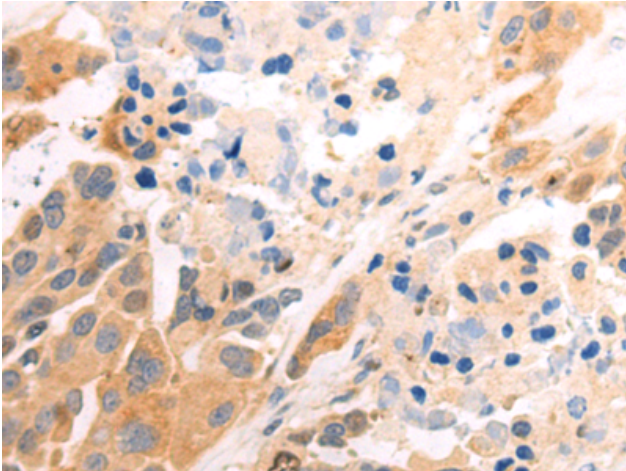
**Purification:** Antigen affinity purification

**Species Reactivity:** Human, Mouse

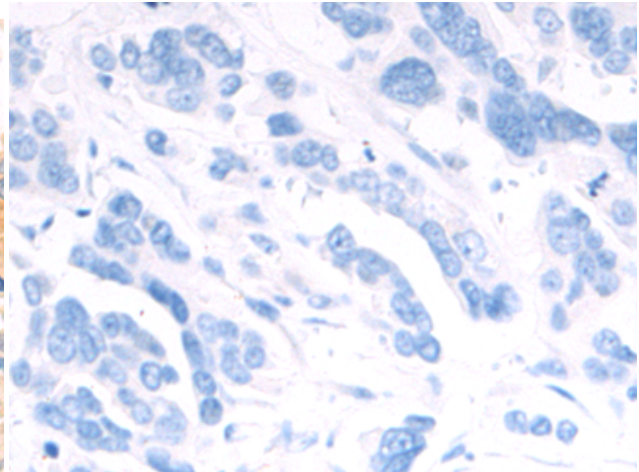
**Constituents:** PBS (without Mg<sup>2+</sup> and Ca<sup>2+</sup>), pH 7.4, 150 mM NaCl, 0.05% Sodium Azide and 40% glycerol

**Research Areas:** Cell Biology

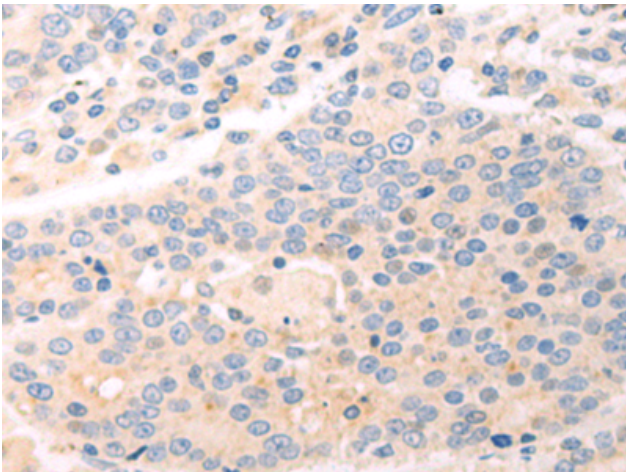
**Storage & Shipping:** Store at -20°C. Avoid repeated freezing and thawing



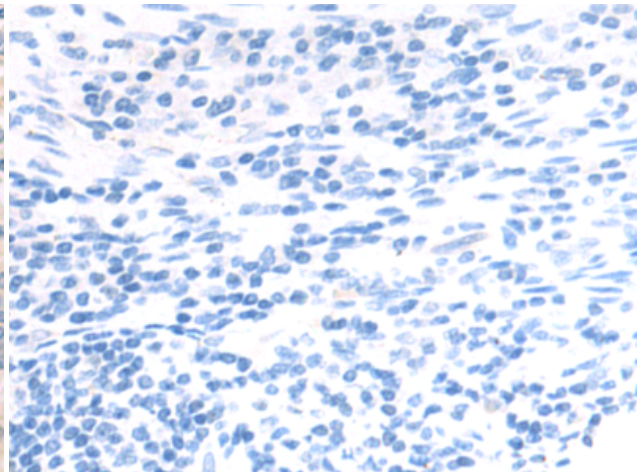
Immunohistochemistry analysis of paraffin embedded Human colorectal cancer tissue using 218440 (CCDC120 Antibody) at a dilution of 1/85 (Cytoplasm).



In comparison with the IHC on the left, the same paraffin-embedded Human colorectal cancer tissue is first treated with the fusion protein and then with 218440 (Anti-CCDC120 Antibody) at dilution 1/85.



The image on the left is immunohistochemistry of paraffin-embedded Human gastric cancer tissue using 218440 (Anti-CCDC120 Antibody) at a dilution of 1/85.



In comparison with the IHC on the left, the same paraffin-embedded Human gastric cancer tissue is first treated with fusion protein and then with D224436 (Anti-CCDC120 Antibody) at dilution 1/85.