

## CCDC134 RABBIT PAB

**Cat.#:** S219272

**Product Name:** Anti-CCDC134 Rabbit Polyclonal Antibody

**Synonyms:**

**UNIPROT ID:** Q9H6E4 (Gene Accession - BC017693 )

**Background:** In extracellular secreted form, promotes proliferation and activation of CD8+ T cells, suggesting a cytokine-like function (PubMed:25125657). Enhances cytotoxic anti-tumor activity of CD8+ T cells (PubMed:25125657). May inhibit ERK and JNK signaling activity (PubMed:18087676, PubMed:23070808). May suppress cell migration and invasion activity, via its effects on ERK and JNK signaling (PubMed:23070808). In the nucleus, enhances stability of the PCAF histone acetyltransferase (HAT) complex member TADA2A and thus promotes PCAF-mediated H3K14 and H4K8 HAT activity. May inhibit TADA2A-mediated TP53/p53 'Lys-321' acetylation, leading to reduced TP53 stability and transcriptional activity. May also promote TADA2A-mediated XRCC6 acetylation thus facilitating cell apoptosis in response to DNA damage.

**Immunogen:** Fusion protein of human CCDC134

**Applications:** ELISA, WB, IHC

**Recommended Dilutions:** IHC: 50-200;WB: 1000-5000;ELISA: 5000-10000

**Host Species:** Rabbit

**Clonality:** Rabbit Polyclonal

**Isotype:** Immunogen-specific rabbit IgG

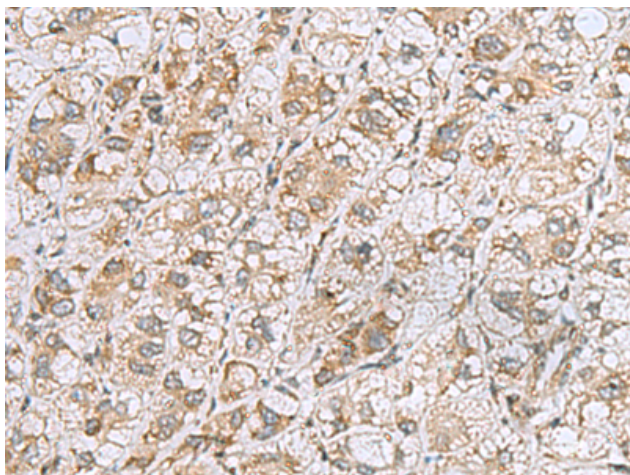
**Purification:** Antigen affinity purification

**Species Reactivity:** Human, Mouse, Rat

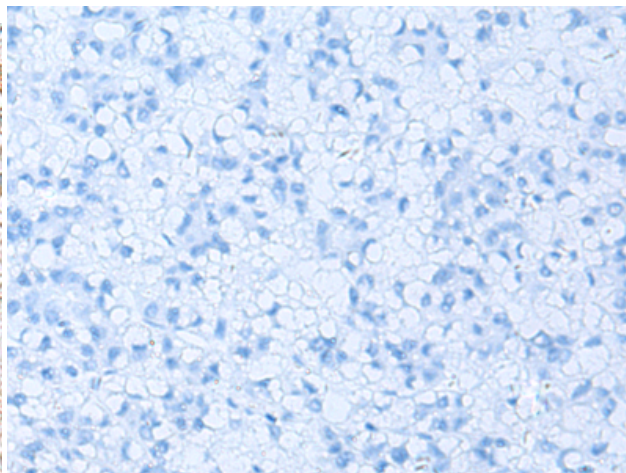
**Constituents:** PBS (without Mg<sup>2+</sup> and Ca<sup>2+</sup>), pH 7.4, 150 mM NaCl, 0.05% Sodium Azide and 40% glycerol

**Research Areas:** Signal Transduction

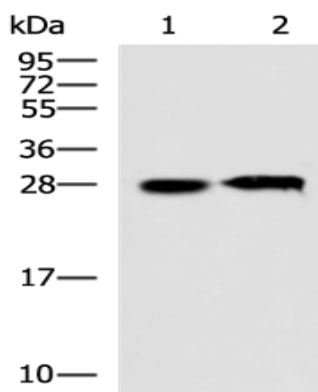
**Storage & Shipping:** Store at -20°C. Avoid repeated freezing and thawing



Immunohistochemistry analysis of paraffin embedded Human liver cancer tissue using 219272(CCDC134 Antibody) at a dilution of 1/50(Cytoplasm).



In comparison with the IHC on the left, the same paraffin-embedded Human liver cancer tissue is first treated with the fusion protein and then with 219272(Anti-CCDC134 Antibody) at dilution 1/50.



Gel: 12%SDS-PAGE, Lysate: 40 µg;

Lane 1-2: Human fetal liver tissue, 293T cell lysates;

Primary antibody: 219272(CCDC134 Antibody) at dilution 1/800;

Secondary antibody: HRP-conjugated Goat anti rabbit IgG at 1/5000 dilution;

Exposure time: 20 seconds