

## CCKAR RABBIT PAB

**Cat.#:** S219798

**Product Name:** Anti-CCKAR Rabbit Polyclonal Antibody

**Synonyms:** CCK-A, CCKRA, CCK1-R

**UNIPROT ID:** P32238 (Gene Accession - NP\_000721 )

**Background:** This gene encodes a G-protein coupled receptor that binds non-sulfated members of the cholecystokinin (CCK) family of peptide hormones. This receptor is a major physiologic mediator of pancreatic enzyme secretion and smooth muscle contraction of the gallbladder and stomach. In the central and peripheral nervous system this receptor regulates satiety and the release of beta-endorphin and dopamine.

**Immunogen:** Synthetic peptide of human CCKAR

**Applications:** ELISA, IHC

**Recommended Dilutions:** IHC: Oct-50; ELISA: 1000-2000

**Host Species:** Rabbit

**Clonality:** Rabbit Polyclonal

**Isotype:** Immunogen-specific rabbit IgG

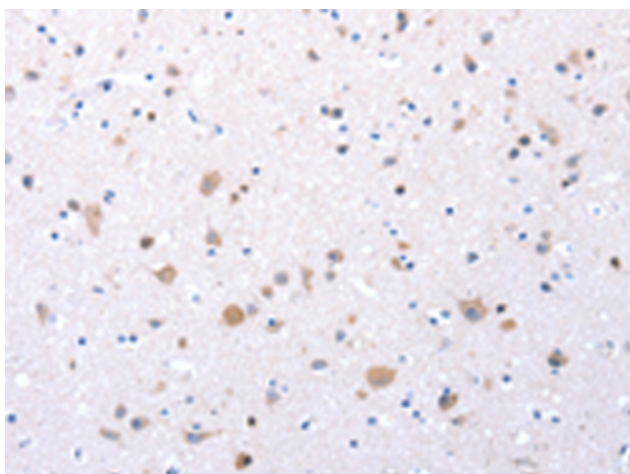
**Purification:** Antigen affinity purification

**Species Reactivity:** Human

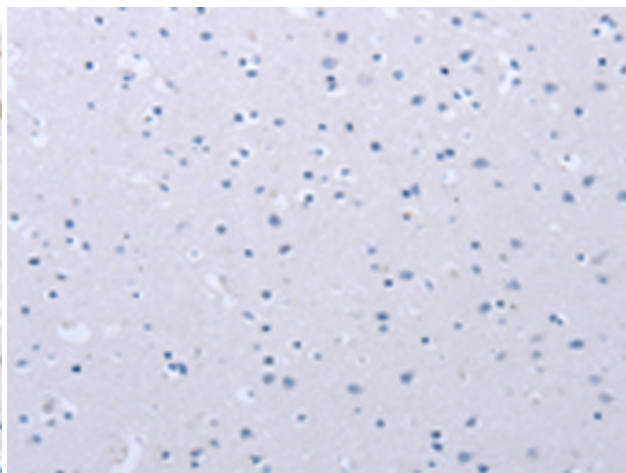
**Constituents:** PBS (without Mg<sup>2+</sup> and Ca<sup>2+</sup>), pH 7.4, 150 mM NaCl, 0.05% Sodium Azide and 40% glycerol

**Research Areas:** Metabolism, Neuroscience

**Storage & Shipping:** Store at -20°C. Avoid repeated freezing and thawing



Immunohistochemistry analysis of paraffin embedded Human brain tissue using 219798(CCKAR Antibody) at a dilution of 1/20(Cytoplasm, Nucleus).



In comparison with the IHC on the left, the same paraffin-embedded Human brain tissue is first treated with the synthetic peptide and then with 219798(Anti-CCKAR Antibody) at dilution 1/20.