

## CCL16 RABBIT PAB

**Cat.#:** S220428

**Product Name:** Anti-CCL16 Rabbit Polyclonal Antibody

**Synonyms:** LEC; LMC; NCC4; CKb12; HCC-4; LCC-1; Mtn-1; NCC-4; SCYL4; ILINCK; SCYA16

**UNIPROT ID:** O15467 (Gene Accession - NP\_004581)

**Background:** This gene is one of several cytokine genes clustered on the q-arm of chromosome 17. Cytokines are a family of secreted proteins involved in immunoregulatory and inflammatory processes. The CC cytokines are proteins characterized by two adjacent cysteines. The cytokine encoded by this gene displays chemotactic activity for lymphocytes and monocytes but not for neutrophils. This cytokine also shows a potent myelosuppressive activity and suppresses proliferation of myeloid progenitor cells. The expression of this gene is upregulated by IL-10.

**Immunogen:** Synthetic peptide of human CCL16

**Applications:** ELISA, WB, IHC

**Recommended Dilutions:** IHC: 50-200;WB: 500-2000;ELISA: 2000-5000

**Host Species:** Rabbit

**Clonality:** Rabbit Polyclonal

**Isotype:** Immunogen-specific rabbit IgG

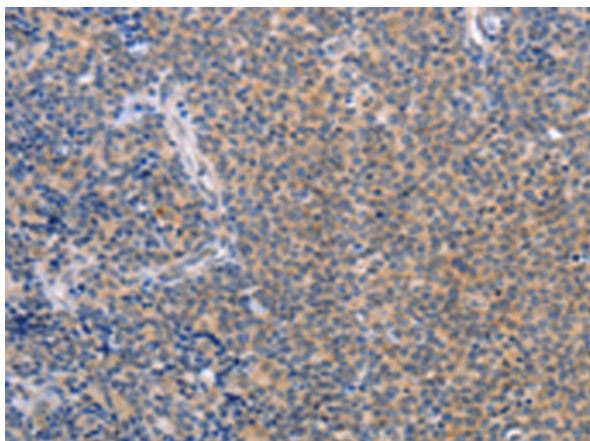
**Purification:** Antigen affinity purification

**Species Reactivity:** Human

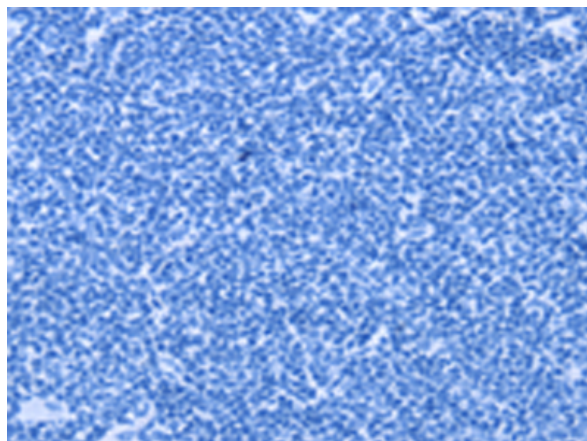
**Constituents:** PBS (without Mg<sup>2+</sup> and Ca<sup>2+</sup>), pH 7.4, 150 mM NaCl, 0.05% Sodium Azide and 40% glycerol

**Research Areas:** Immunology

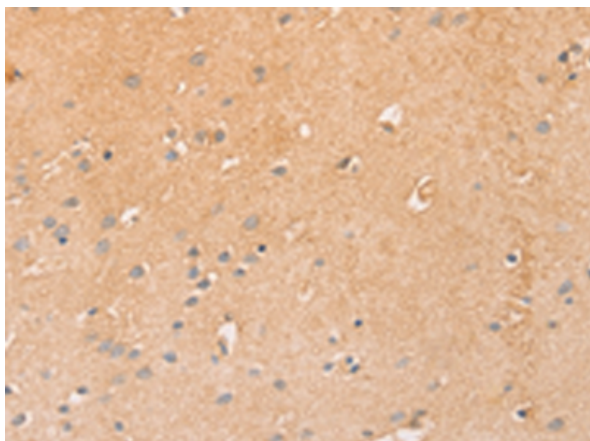
**Storage & Shipping:** Store at -20°C. Avoid repeated freezing and thawing



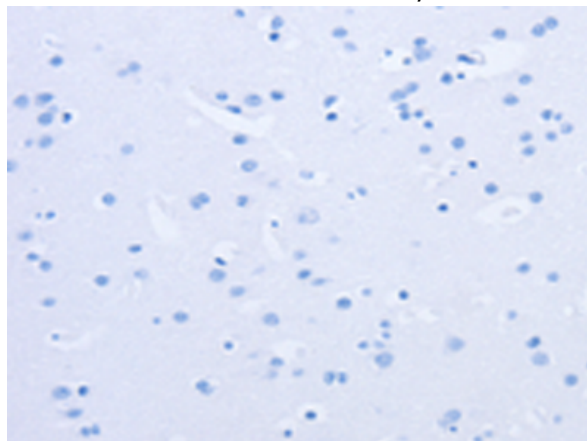
Immunohistochemistry analysis of paraffin embedded Human Lymphoma tissue using 220428(CCL16 Antibody) at a dilution of 1/50(Cytoplasm).



In comparison with the IHC on the left, the same paraffin-embedded Human Lymphoma tissue is first treated with the synthetic peptide and then with 220428(Anti-CCL16 Antibody) at dilution 1/50.



The image on the left is immunohistochemistry of paraffin-embedded Human brain tissue using 220428(Anti-CCL16 Antibody) at a dilution of 1/50.



In comparison with the IHC on the left, the same paraffin-embedded Human brain tissue is first treated with synthetic peptide and then with D261517(Anti-CCL16 Antibody) at dilution 1/50.



Gel: 15%SDS-PAGE, Lysate: 40 µg;  
Lane: HepG2 cells;  
Primary antibody: 220428(CCL16 Antibody) at dilution 1/760;  
Secondary antibody: Goat anti rabbit IgG at 1/8000 dilution;  
Exposure time: 3 seconds



# Product Description

Pioneering GTPase and Oncogene Product Development since 2010

---