

## CCL17 RABBIT PAB

**Cat.#:** S219687

**Product Name:** Anti-CCL17 Rabbit Polyclonal Antibody

**Synonyms:** TARC; ABCD-2; SCYA17; A-152E5.3

**UNIPROT ID:** Q92583 (Gene Accession - NP\_002978.1)

**Background:** This antimicrobial gene is one of several Cys-Cys (CC) cytokine genes clustered on the q arm of chromosome 16. Cytokines are a family of secreted proteins involved in immunoregulatory and inflammatory processes. The CC cytokines are proteins characterized by two adjacent cysteines. The cytokine encoded by this gene displays chemotactic activity for T lymphocytes, but not monocytes or granulocytes. The product of this gene binds to chemokine receptors CCR4 and CCR8. This chemokine plays important roles in T cell development in thymus as well as in trafficking and activation of mature T cells.

**Immunogen:** Synthetic peptide of human CCL17

**Applications:** ELISA, WB, IHC

**Recommended Dilutions:** IHC: 50-100;WB: 500-2000;ELISA: 5000-10000

**Host Species:** Rabbit

**Clonality:** Rabbit Polyclonal

**Isotype:** Immunogen-specific rabbit IgG

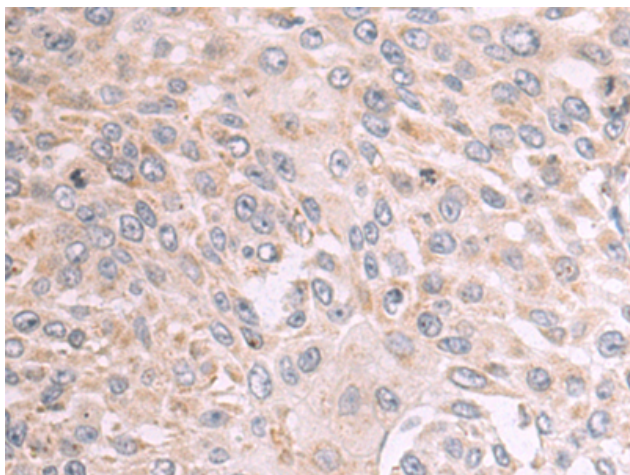
**Purification:** Antigen affinity purification

**Species Reactivity:** Human, Mouse

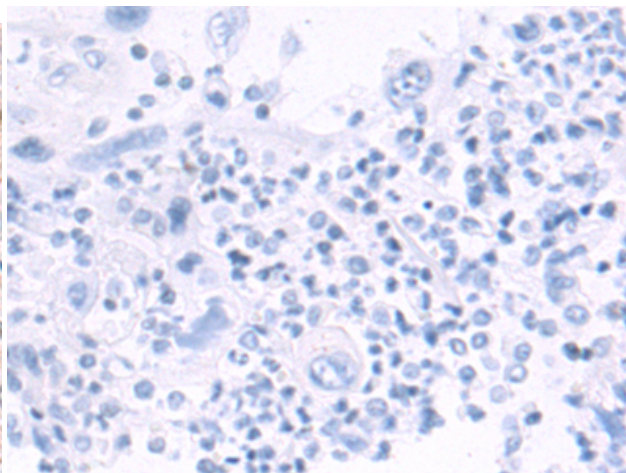
**Constituents:** PBS (without Mg<sup>2+</sup> and Ca<sup>2+</sup>), pH 7.4, 150 mM NaCl, 0.05% Sodium Azide and 40% glycerol

**Research Areas:** Immunology

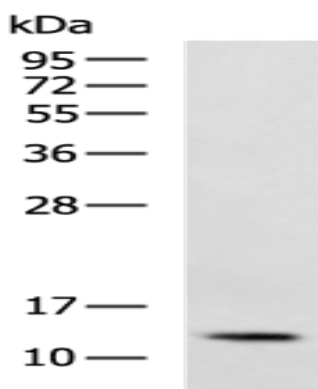
**Storage & Shipping:** Store at -20°C. Avoid repeated freezing and thawing



Immunohistochemistry analysis of paraffin embedded Human esophagus cancer tissue using 219687(CCL17 Antibody) at a dilution of 1/60(Secreted).



In comparison with the IHC on the left, the same paraffin-embedded Human esophagus cancer tissue is first treated with the synthetic peptide and then with 219687(Anti-CCL17 Antibody) at dilution 1/60.



Gel: 12%SDS-PAGE, Lysate: 40  $\mu$ g;  
Lane: Mouse spleen tissue lysate;  
Primary antibody: 219687(CCL17 Antibody) at dilution 1/300;  
Secondary antibody: HRP-conjugated Goat anti rabbit IgG at 1/5000 dilution;  
Exposure time: 30 seconds