

CCL22 RABBIT PAB

Cat.#: S222112

Product Name: Anti-CCL22 Rabbit Polyclonal Antibody

Synonyms: MDC; ABCD-1; SCYA22; STCP-1; DC/B-CK; A-152E5.1

UNIPROT ID: O00626 (Gene Accession - NP_002981)

Background: This antimicrobial gene is one of several Cys-Cys (CC) cytokine genes clustered on the q arm of chromosome 16. Cytokines are a family of secreted proteins involved in immunoregulatory and inflammatory processes. The CC cytokines are proteins characterized by two adjacent cysteines. The cytokine encoded by this gene displays chemotactic activity for monocytes, dendritic cells, natural killer cells and for chronically activated T lymphocytes. It also displays a mild activity for primary activated T lymphocytes and has no chemoattractant activity for neutrophils, eosinophils and resting T lymphocytes. The product of this gene binds to chemokine receptor CCR4. This chemokine may play a role in the trafficking of activated T lymphocytes to inflammatory sites and other aspects of activated T lymphocyte physiology.

Immunogen: Synthetic peptide of human CCL22

Applications: ELISA, IHC

Recommended Dilutions: IHC: 25-50; ELISA: 2000-5000

Host Species: Rabbit

Clonality: Rabbit Polyclonal

Isotype: Immunogen-specific rabbit IgG

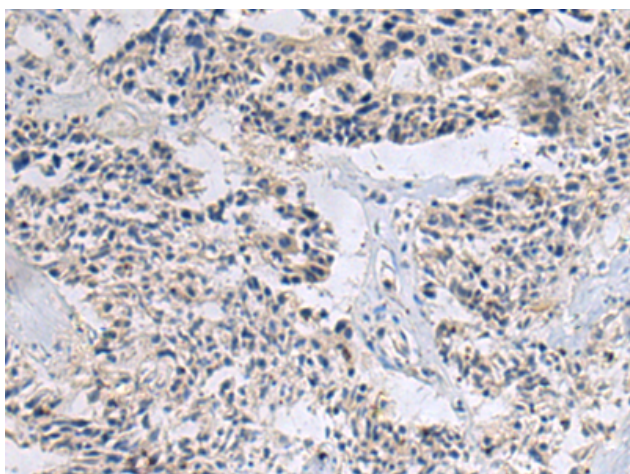
Purification: Antigen affinity purification

Species Reactivity: Human

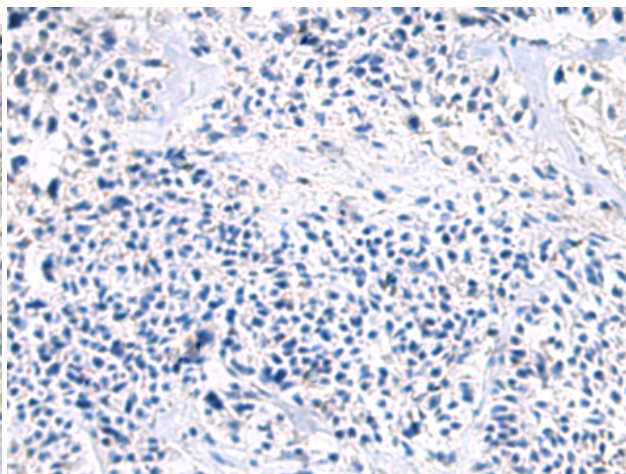
Constituents: PBS (without Mg²⁺ and Ca²⁺), pH 7.4, 150 mM NaCl, 0.05% Sodium Azide and 40% glycerol

Research Areas: Immunology

Storage & Shipping: Store at -20°C. Avoid repeated freezing and thawing



Immunohistochemistry analysis of paraffin embedded Human ovarian cancer tissue using 222112(CCL22 Antibody) at a dilution of 1/30(Secreted).



In comparison with the IHC on the left, the same paraffin-embedded Human ovarian cancer tissue is first treated with the synthetic peptide and then with 222112(Anti-CCL22 Antibody) at dilution 1/30.



Product Description

Pioneering GTPase and Oncogene Product Development since 2010
