

## CCL26 RABBIT PAB

**Cat.#:** S213416

**Product Name:** Anti-CCL26 Rabbit Polyclonal Antibody

**Synonyms:** IMAC; TSC-1; MIP-4 $\alpha$ ; SCYA26; MIP-4 $\alpha$

**UNIPROT ID:** Q9Y258 (Gene Accession - NP\_006063 )

**Background:** This gene is one of two Cys-Cys (CC) cytokine genes clustered on the q arm of chromosome 7. Cytokines are a family of secreted proteins involved in immunoregulatory and inflammatory processes. The CC cytokines are proteins characterized by two adjacent cysteines. The cytokine encoded by this gene displays chemotactic activity for normal peripheral blood eosinophils and basophils. This protein also has antimicrobial activity, displaying an antibacterial effect on *S. pneumoniae*, *S. aureus*, Non-typeable *H. influenzae*, and *P. aeruginosa*. The product of this gene is one of three related chemokines that specifically activate chemokine receptor CCR3. This chemokine may contribute to the eosinophil accumulation in atopic diseases. [provided by RefSeq, Jul 2020]

**Immunogen:** Synthetic peptide of human CCL26

**Applications:** ELISA, IHC

**Recommended Dilutions:** IHC: 50-100; ELISA: 5000-10000

**Host Species:** Rabbit

**Clonality:** Rabbit Polyclonal

**Isotype:** Immunogen-specific rabbit IgG

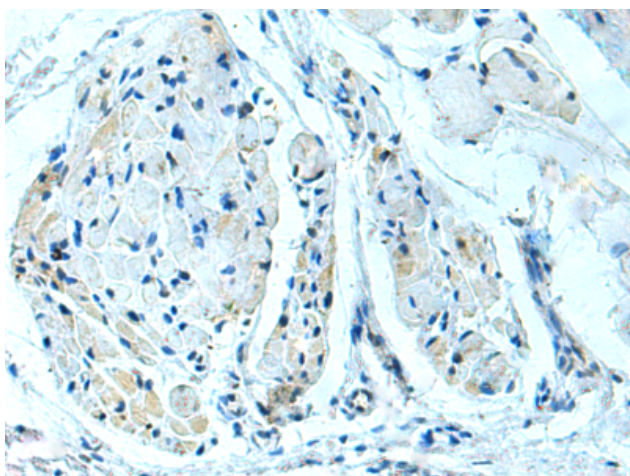
**Purification:** Antigen affinity purification

**Species Reactivity:** Human

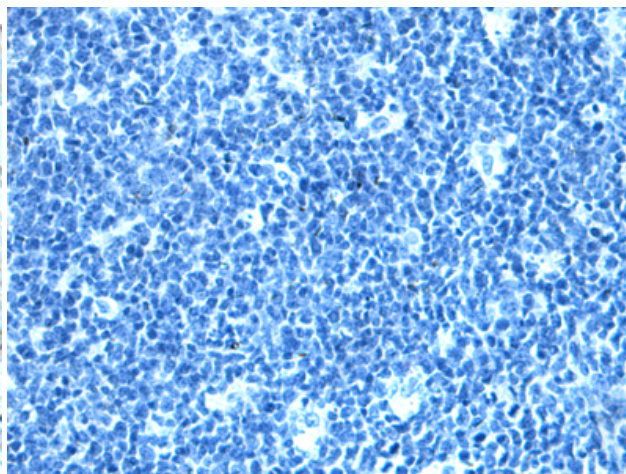
**Constituents:** PBS (without Mg<sup>2+</sup> and Ca<sup>2+</sup>), pH 7.4, 150 mM NaCl, 0.05% Sodium Azide and 40% glycerol

**Research Areas:** Immunology

**Storage & Shipping:** Store at -20°C. Avoid repeated freezing and thawing



Immunohistochemistry analysis of paraffin embedded Human tonsil tissue using 213416(CCL26 Antibody) at a dilution of 1/40(Secreted).



In comparison with the IHC on the left, the same paraffin-embedded Human tonsil tissue is first treated with the synthetic peptide and then with 213416(Anti-CCL26 Antibody) at dilution 1/40.



# Product Description

Pioneering GTPase and Oncogene Product Development since 2010

---