

## CCNT2 RABBIT PAB

**Cat.#:** S221264

**Product Name:** Anti-CCNT2 Rabbit Polyclonal Antibody

**Synonyms:** CYCT2

**UNIPROT ID:** O60583 (Gene Accession - NP\_490595 )

**Background:** The protein encoded by this gene belongs to the highly conserved cyclin family, whose members are characterized by a dramatic periodicity in protein abundance through the cell cycle. Cyclins function as regulators of CDK kinases. Different cyclins exhibit distinct expression and degradation patterns which contribute to the temporal coordination of each mitotic event. This cyclin and its kinase partner CDK9 were found to be subunits of the transcription elongation factor p-TEFb. The p-TEFb complex containing this cyclin was reported to interact with, and act as a negative regulator of human immunodeficiency virus type 1 (HIV-1) Tat protein.

**Immunogen:** Synthetic peptide of human CCNT2

**Applications:** ELISA, WB, IHC

**Recommended Dilutions:** IHC: 20-100;WB: 500-2000;ELISA: 5000-10000

**Host Species:** Rabbit

**Clonality:** Rabbit Polyclonal

**Isotype:** Immunogen-specific rabbit IgG

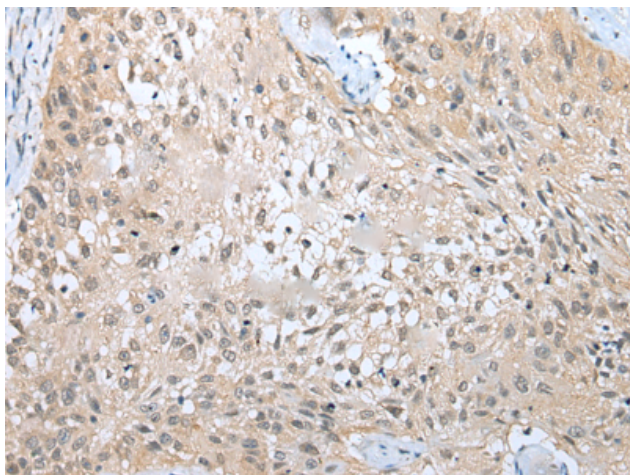
**Purification:** Antigen affinity purification

**Species Reactivity:** Human

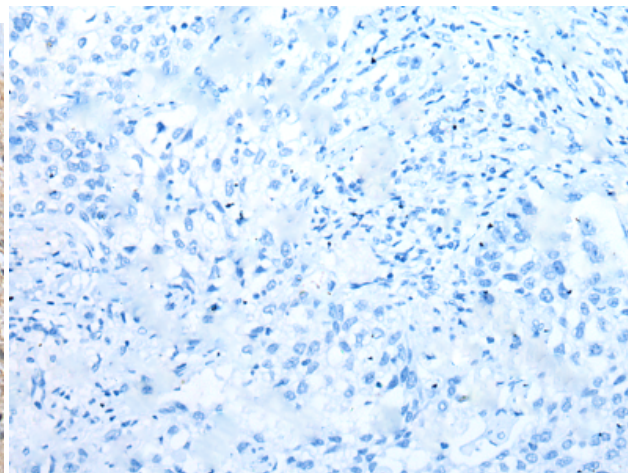
**Constituents:** PBS (without Mg<sup>2+</sup> and Ca<sup>2+</sup>), pH 7.4, 150 mM NaCl, 0.05% Sodium Azide and 40% glycerol

**Research Areas:** Epigenetics and Nuclear Signaling, Cancer

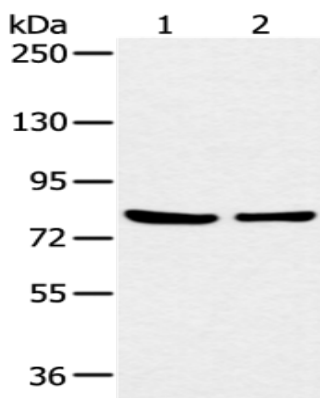
**Storage & Shipping:** Store at -20°C. Avoid repeated freezing and thawing



Immunohistochemistry analysis of paraffin embedded Human lung cancer tissue using 221264 (CCNT2 Antibody) at a dilution of 1/20 (Nucleus and Cytoplasm).



In comparison with the IHC on the left, the same paraffin-embedded Human lung cancer tissue is first treated with the synthetic peptide and then with 221264 (Anti-CCNT2 Antibody) at dilution 1/20.



Gel: 6% SDS-PAGE, Lysate: 40  $\mu$ g;  
Lane 1-2: HeLa and 293T cell;  
Primary antibody: 221264 (CCNT2 Antibody) at dilution 1/200;  
Secondary antibody: Goat anti rabbit IgG at 1/8000 dilution;  
Exposure time: 30 seconds