

## CCNYL1 RABBIT PAB

**Cat.#:** S221690

**Product Name:** Anti-CCNYL1 Rabbit Polyclonal Antibody

**Synonyms:**

**UNIPROT ID:** Q8N7R7 (Gene Accession - XP\_005246400 )

**Background:** CCNYL1 belongs to the cyclin family, Cyclin Y subfamily and contains 1 cyclin N terminal domain. The specific function of CCNYL1 is not yet known.

**Immunogen:** Synthetic peptide of human CCNYL1

**Applications:** ELISA, IHC

**Recommended Dilutions:** IHC: 25-100; ELISA: 5000-10000

**Host Species:** Rabbit

**Clonality:** Rabbit Polyclonal

**Isotype:** Immunogen-specific rabbit IgG

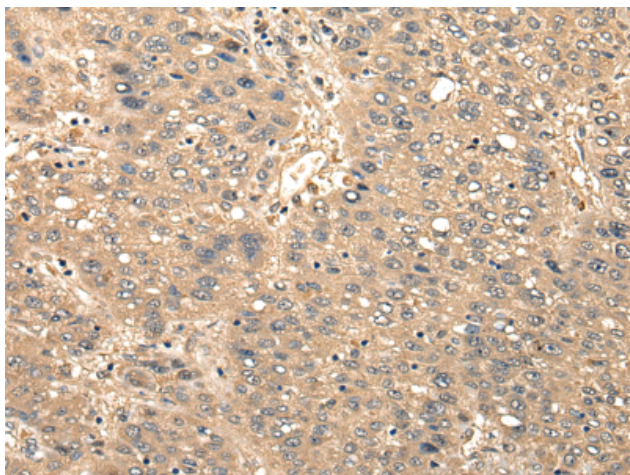
**Purification:** Antigen affinity purification

**Species Reactivity:** Human

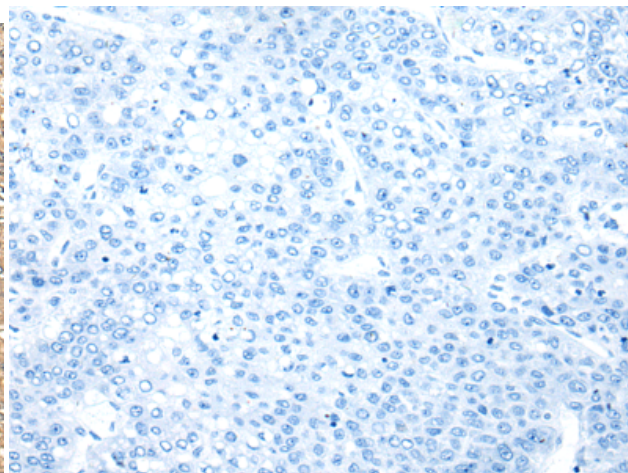
**Constituents:** PBS (without Mg<sup>2+</sup> and Ca<sup>2+</sup>), pH 7.4, 150 mM NaCl, 0.05% Sodium Azide and 40% glycerol

**Research Areas:** Epigenetics and Nuclear Signaling, Cancer, Cell Biology

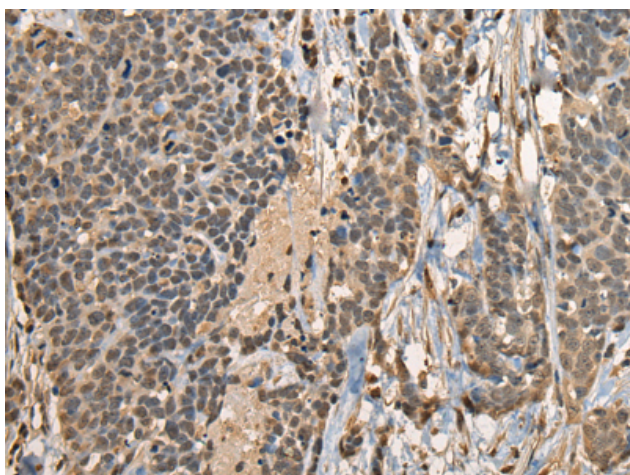
**Storage & Shipping:** Store at -20°C. Avoid repeated freezing and thawing



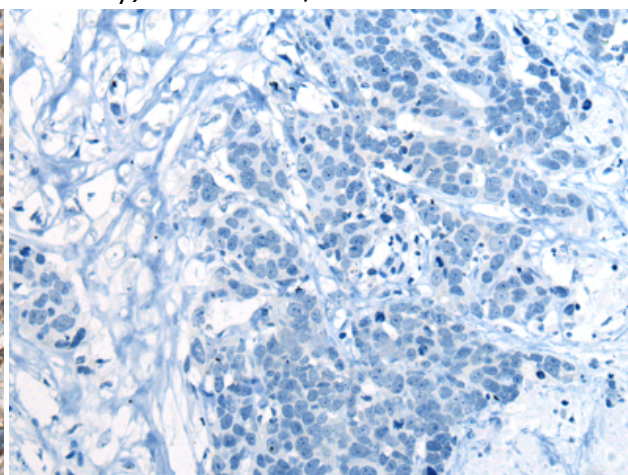
Immunohistochemistry analysis of paraffin embedded Human liver cancer tissue using 221690 (CCNYL1 Antibody) at a dilution of 1/25 (Cytoplasm or Nucleus).



In comparison with the IHC on the left, the same paraffin-embedded Human liver cancer tissue is first treated with the synthetic peptide and then with 221690 (Anti-CCNYL1 Antibody) at dilution 1/25.



The image on the left is immunohistochemistry of paraffin-embedded Human thyroid cancer tissue using 221690 (Anti-CCNYL1 Antibody) at a dilution of 1/25.



In comparison with the IHC on the left, the same paraffin-embedded Human thyroid cancer tissue is first treated with synthetic peptide and then with D263394 (Anti-CCNYL1 Antibody) at dilution 1/25.