

CCR8 RABBIT PAB

Cat.#: N226017

Product Name: Anti-CCR8 Rabbit pAb

Synonyms: CKRL1; CMKBR8; CMKBRL2

UNIPROT ID: P51685

Background: Receptor for the chemokine CCL1/SCYA1/I-309. May regulate monocyte chemotaxis and thymic cell line apoptosis. Alternative coreceptor with CD4 for HIV-1 infection.

Immunogen: A synthetic peptide of human CCR8

Applications: WB, ICC/IF, FC

Recommended Dilutions: WB: 1/500-1/1000 IF: 1/50-1/200 FC: 1/50-1/100

Host Species: Rabbit

Clonality: Rabbit Polyclonal

Clone ID: -

MW: Calculated MW: 41 kDa; Observed MW: 41 kDa

Isotype: IgG

Purification: Affinity Purified

Species Reactivity: Rat

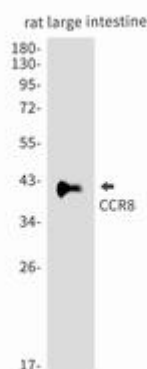
Conjugation: Unconjugated

Modification: Unmodified

Constituents: PBS (without Mg²⁺ and Ca²⁺), pH 7.3 containing 50% glycerol, 0.5% BSA and 0.02% sodium azide

Research Areas: Immunology

Storage & Shipping: Store at -20°C. Avoid repeated freezing and thawing



Western blot analysis of CCR8 in rat large intestine lysates using CCR8 antibody.



Product Description

Pioneering GTPase and Oncogene Product Development since 2010
