

## CCT2 RABBIT MAB

**Cat.#:** N263255

**Product Name:** Anti-CCT2 Rabbit Monoclonal Antibody

**Synonyms:** CCT2; 99D8.1; CCTB; T-complex protein 1 subunit beta; TCP-1-beta; CCT-beta

**UNIPROT ID:** P78371

**Background:** Molecular chaperone; assists the folding of proteins upon ATP hydrolysis. As part of the BBS/CCT complex may play a role in the assembly of BBSome, a complex involved in ciliogenesis regulating transports vesicles to the cilia. Known to play a role, in vitro, in the folding of actin and tubulin.

**Immunogen:** A synthetic peptide of human CCT2

**Applications:** WB,IHC-F,IHC-P,ICC/IF,IP

**Recommended Dilutions:** WB: 1/500-1/1000 IHC: 1/50-1/100 IF: 1/50-1/200 IP: 1/20

**Host Species:** Rabbit

**Clonality:** Rabbit Monoclonal

**Clone ID:** R07-6C2

**MW:** Calculated MW: 57 kDa; Observed MW: 57 kDa

**Isotype:** IgG

**Purification:** Affinity Purified

**Species Reactivity:** Human,Mouse,Rat

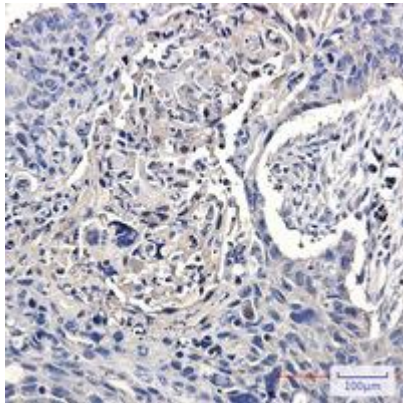
**Conjugation:** Unconjugated

**Modification:** Unmodified

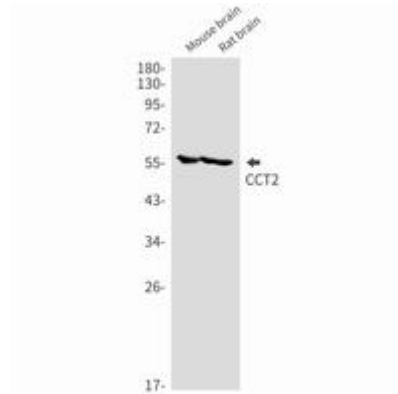
**Constituents:** PBS (without Mg<sup>2+</sup> and Ca<sup>2+</sup>), pH 7.3 containing 50% glycerol, 0.5% BSA and 0.02% sodium azide

**Research Areas:** Signal Transduction

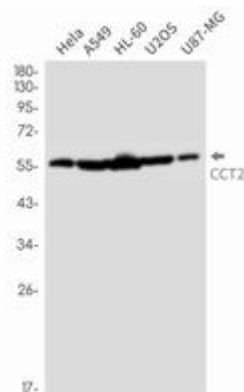
**Storage & Shipping:** Store at -20°C. Avoid repeated freezing and thawing



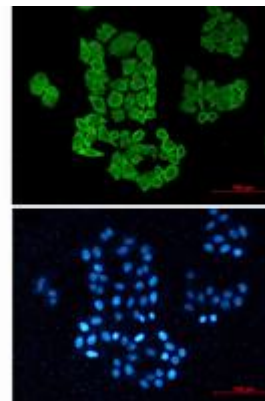
Immunohistochemistry analysis of paraffin-embedded Human lung cancer using CCT2 antibody. High-pressure and temperature Sodium Citrate pH 6.0 was used for antigen retrieval.



Western blot analysis of CCT2 in mouse brain, rat brain lysates using CCT2 antibody.



Western blot analysis of CCT2 in HeLa, A549, HL-60, U2OS, U87-MG lysates using CCT2 antibody.



Immunocytochemistry analysis of CCT2 (green) in HeLa using CCT2 antibody, and DAPI (blue).