

CCT8L2 RABBIT PAB

Cat.#: S218477

Product Name: Anti-CCT8L2 Rabbit Polyclonal Antibody

Synonyms: CESK1

UNIPROT ID: Q96SF2 (Gene Accession - BC033797)

Background: Possible molecular chaperone; assists the folding of proteins upon ATP hydrolysis.

Immunogen: Fusion protein of human CCT8L2

Applications: ELISA, IHC

Recommended Dilutions: IHC: 30-150; ELISA: 5000-10000

Host Species: Rabbit

Clonality: Rabbit Polyclonal

Isotype: Immunogen-specific rabbit IgG

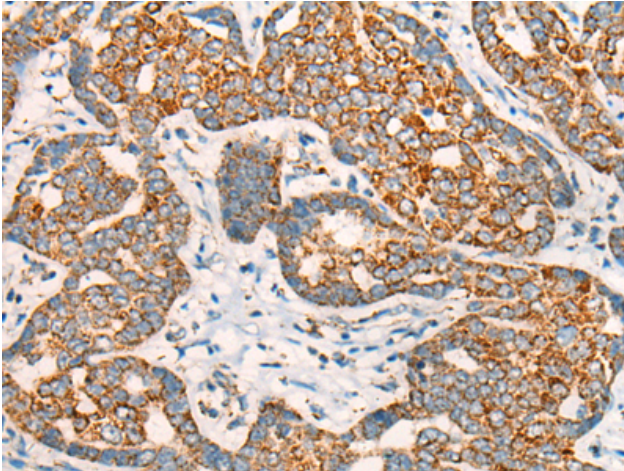
Purification: Antigen affinity purification

Species Reactivity: Human

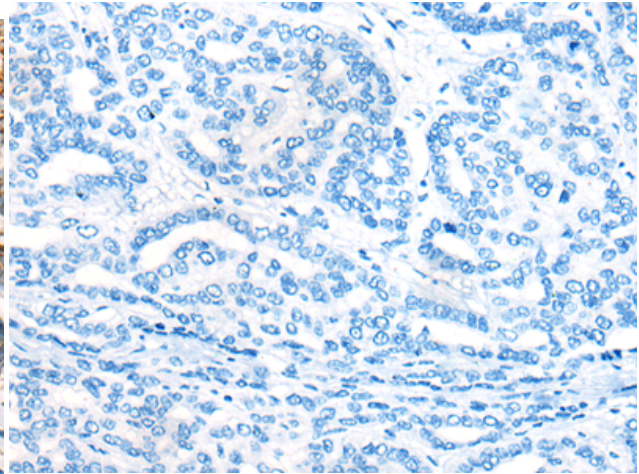
Constituents: PBS (without Mg²⁺ and Ca²⁺), pH 7.4, 150 mM NaCl, 0.05% Sodium Azide and 40% glycerol

Research Areas: Cell Biology

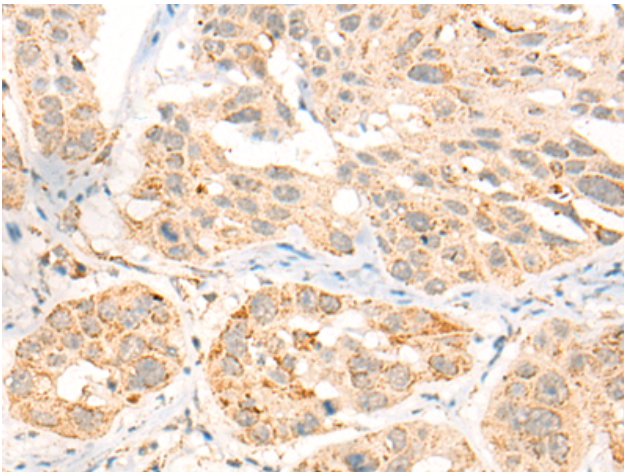
Storage & Shipping: Store at -20°C. Avoid repeated freezing and thawing



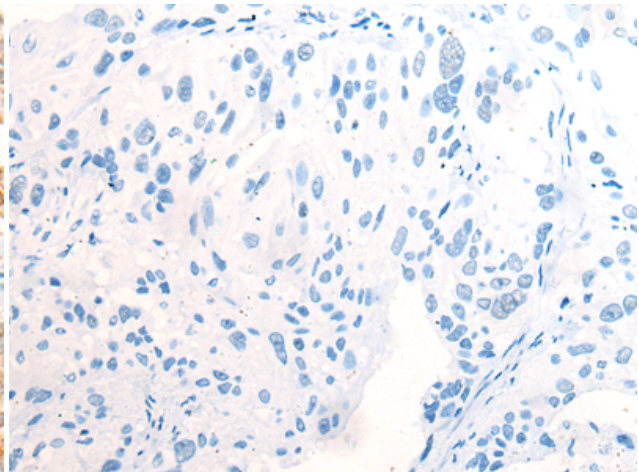
Immunohistochemistry analysis of paraffin embedded Human liver cancer tissue using 218477(CCT8L2 Antibody) at a dilution of 1/45(Cytoplasm).



In comparison with the IHC on the left, the same paraffin-embedded Human liver cancer tissue is first treated with the fusion protein and then with 218477(Anti-CCT8L2 Antibody) at dilution 1/45.



The image on the left is immunohistochemistry of paraffin-embedded Human esophagus cancer tissue using 218477(Anti-CCT8L2 Antibody) at a dilution of 1/45.



In comparison with the IHC on the left, the same paraffin-embedded Human esophagus cancer tissue is first treated with fusion protein and then with D224522(Anti-CCT8L2 Antibody) at dilution 1/45.